

Synonym

C5a, Complement Component 5a

Source

Human Complement C5a, Fc Tag(C5A-H525a) is expressed from human 293 cells (HEK293). It contains AA Leu 679 - Arg 751 (Accession # [P01031-1](#)).  
Predicted N-terminus: Leu 679

Molecular Characterization

C5a(Leu 679 - Arg 751) P01031-1	Fc(Pro 100 - Lys 330) P01857
------------------------------------	---------------------------------

This protein carries a human IgG1 Fc tag at the C-terminus.  
  
The protein has a calculated MW of 34.6 kDa. The protein migrates as 38-40 kDa and 41-44 kDa under reducing (R) condition (SDS-PAGE) due to glycosylation.

Endotoxin

Less than 1.0 EU per µg by the LAL method / rFC method.

Purity

>90% as determined by SDS-PAGE.  
  
>90% as determined by SEC-MALS.

Formulation

Lyophilized from 0.22 µm filtered solution in  
Tris with Glycine, Arginine and NaCl, pH7.5 with trehalose as protectant.  
  
Contact us for customized product form or formulation.

Reconstitution

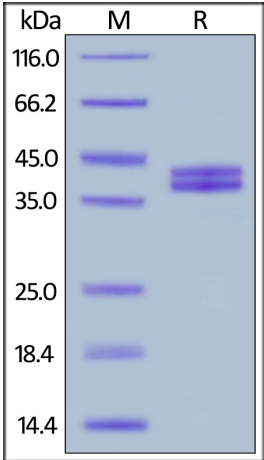
Please see Certificate of Analysis for specific instructions.  
  
*For best performance, we strongly recommend you to follow the reconstitution protocol provided in the CoA.*

Storage

For long term storage, the product should be stored at lyophilized state at -20°C or lower.  
  
*Please avoid repeated freeze-thaw cycles.*  
  
This product is stable after storage at:

- 20°C to -70°C for 12 months in lyophilized state;
- 70°C for 3 months under sterile conditions after reconstitution.

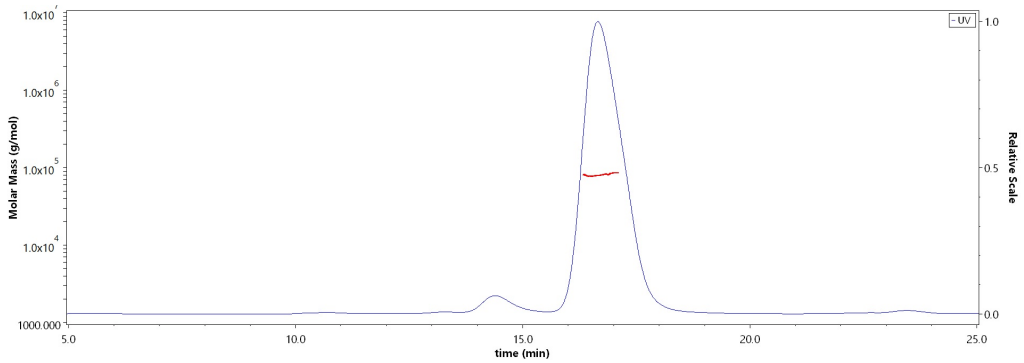
SDS-PAGE



Human Complement C5a, Fc Tag on SDS-PAGE under reducing (R) condition. The gel was stained with Coomassie Blue. The purity of the protein is greater than 90%.

Bioactivity-ELISA

SEC-MALS

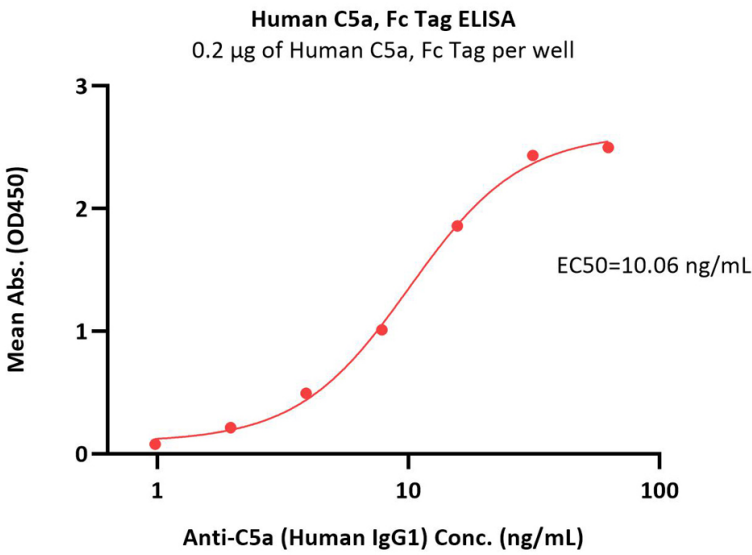


The purity of Human Complement C5a, Fc Tag (Cat. No. C5A-H525a) is more than 90% and the molecular weight of this protein is around 80-90 kDa verified by SEC-MALS.  
[Report](#)



Human Complement C5a Protein, Fc Tag (MALS verified)

Catalog # C5A-H525a



Immobilized Human Complement C5a, Fc Tag (Cat. No. C5A-H525a) at 2 µg/mL (100 µL/well) can bind Anti-C5a (Human IgG1) with a linear range of 2-16 ng/mL (QC tested).

Background

Complement Component C5a (C5a) is also known as C5, and is a protein fragment released from complement component C5, is a potent chemotactic factor for human peripheral blood neutrophils and monocytes, and is believed to play an important role in a number of inflammatory conditions. There are several functions in the below: C5a is an anaphylatoxin, causing the release of histamine from mast cells; C5a is effective leukocyte chemoattractants, causing the accumulation of white blood cells, especially neutrophil granulocytes, at sites of complement activation; C5a activates white blood cells by increasing avidity for white blood cell integrins and upregulating the Lipoxygenase pathway for arachidonic acid metabolism; C5a is a powerful inflammatory mediator, and seems to be a key factor in the development of pathology of many inflammatory diseases involving the complement system; C5a modulates balance between activating versus inhibitory IgG Fc receptors on leukocytes, thereby enhancing autoimmune response.

