

Human Complement Receptor type 2 Protein, His Tag (MALS verified)

Catalog # CD2-H52H4



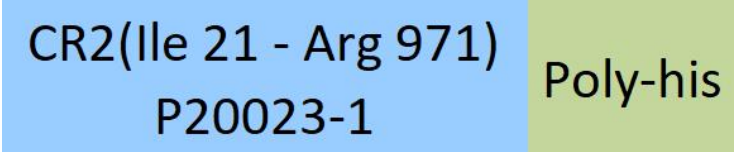
Synonym

CD21

Source

Human Complement Receptor type 2 Protein, His Tag(CD2-H52H4) is expressed from human 293 cells (HEK293). It contains AA Ile 21 - Arg 971 (Accession # [P20023-1](#)).
Predicted N-terminus: Ile 21

Molecular Characterization



This protein carries a polyhistidine tag at the C-terminus.
The protein has a calculated MW of 106.1 kDa. The protein migrates as 110-120 kDa under reducing (R) condition (SDS-PAGE) due to glycosylation.

Endotoxin

Less than 1.0 EU per µg by the LAL method / rFC method.

Purity

>95% as determined by SDS-PAGE.

Formulation

Lyophilized from 0.22 µm filtered solution in PBS, pH7.4 with trehalose as protectant.
Contact us for customized product form or formulation.

Reconstitution

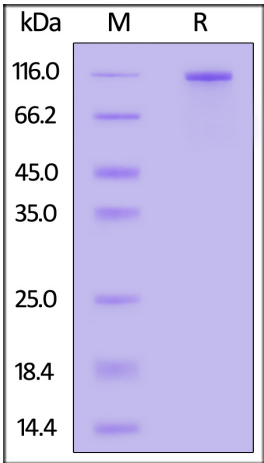
Please see Certificate of Analysis for specific instructions.
For best performance, we strongly recommend you to follow the reconstitution protocol provided in the CoA.

Storage

For long term storage, the product should be stored at lyophilized state at -20°C or lower.
Please avoid repeated freeze-thaw cycles.

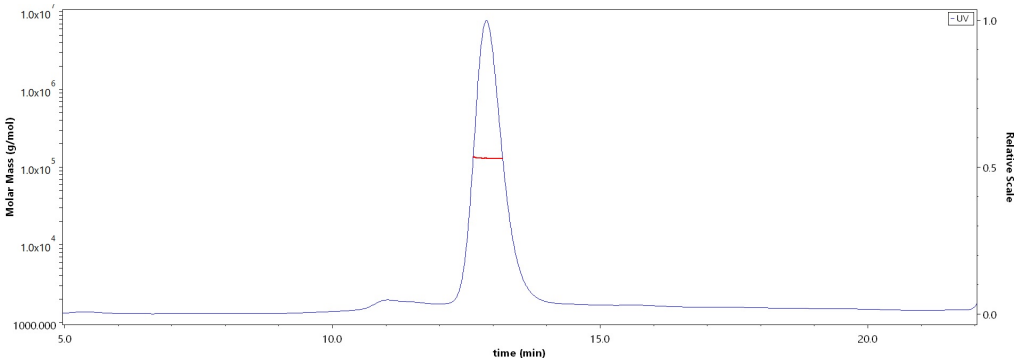
- This product is stable after storage at:
- 20°C to -70°C for 12 months in lyophilized state;
 - 70°C for 3 months under sterile conditions after reconstitution.

SDS-PAGE



Human Complement Receptor type 2 Protein, His Tag on SDS-PAGE under reducing (R) condition. The gel was stained with Coomassie Blue. The purity of the protein is greater than 95%.

SEC-MALS



The purity of Human Complement Receptor type 2 Protein, His Tag (Cat. No. CD2-H52H4) is more than 85% and the molecular weight of this protein is around 120-140 kDa verified by SEC-MALS.
[Report](#)

Background

Epstein-Barr virus (EBV), also designated human herpesvirus 4 (HHV-4), is a member of the herpesvirus family and is one of the most common human viruses. EBV binds to the cell surface receptor 2 (CD21/CR2) on human B cells using its major envelope glycoprotein 350 (gp350) and, as such, the EBV gp350 Envelope Protein,



Human Complement Receptor type 2 Protein, His Tag (MALS verified)

Catalog # CD2-H52H4



also designated the EBV envelope glycoprotein complex 250/350, is crucial in mediating the initial stages of EBV infection. The EBV gp350 Envelope Protein is expressed on virion envelope as well as EBV producer cells.

Discounts, Gifts,
and more!

