



Synonym

CD3E & CD3D,CD3 delta & CD3 epsilon

Source

Human CD3E&CD3D Heterodimer Protein, Fc Tag&Fc Tag(CDD-H5255) is expressed from human 293 cells (HEK293). It contains AA Asp 23 - Asp 126 (CD3E) & Phe 22 - Ala 105 (CD3D) (Accession # [P07766-1](#) (CD3E) & [P04234-1](#) (CD3D)).
Predicted N-terminus: Asp 23 (CD3E) & Phe 22 (CD3D)

Molecular Characterization

| | |
|-------------------------------------|---------------------------------|
| CD3E (Asp 23 - Asp 126) P07766-1 | Fc(Pro 100 - Lys 330) P01857 |
| CD3D (Phe 22 - Ala 105) P04234-1 | Fc(Pro 100 - Lys 330) P01857 |

Human CD3E&CD3D Heterodimer Protein, Fc Tag&Fc Tag is produced by co-expression of CD3E and CD3D, has a calculated MW of 38.3 kDa (CD3E) and 35.8 kDa (CD3D). Subunit CD3E is fused with a human IgG1 Fc tag at the C-terminus and subunit CD3D is fused with a human IgG1 Fc tag at the C-terminus. As a result of glycosylation, the protein migrates as 45-60 kDa under reducing (R) condition, and 90-110 kDa under non-reducing (NR) condition (SDS-PAGE).

Endotoxin

Less than 1.0 EU per µg by the LAL method / rFC method.

Purity

>90% as determined by SDS-PAGE.
>90% as determined by SEC-MALS.

Formulation

Lyophilized from 0.22 µm filtered solution in PBS, pH7.4 with trehalose as protectant.
Contact us for customized product form or formulation.

Reconstitution

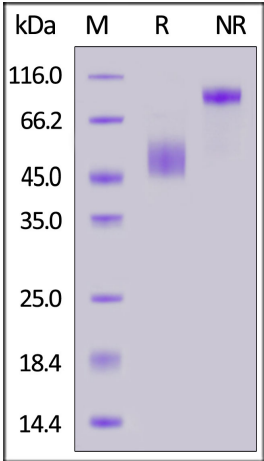
Please see Certificate of Analysis for specific instructions.
For best performance, we strongly recommend you to follow the reconstitution protocol provided in the CoA.

Storage

For long term storage, the product should be stored at lyophilized state at -20°C or lower.
Please avoid repeated freeze-thaw cycles.
This product is stable after storage at:

- 20°C to -70°C for 12 months in lyophilized state;
- 70°C for 3 months under sterile conditions after reconstitution.

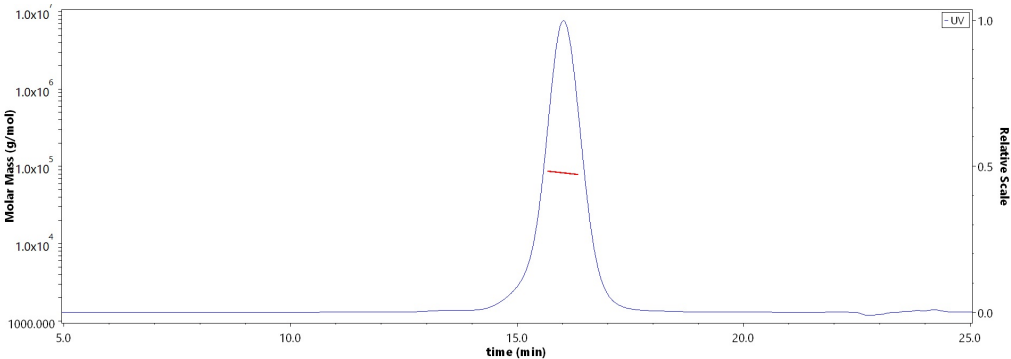
SDS-PAGE



Human CD3E&CD3D Heterodimer Protein, Fc Tag&Fc Tag on SDS-PAGE under reducing (R) and non-reducing (NR) conditions. The gel was stained with Coomassie Blue. The purity of the protein is greater than 90%.

Bioactivity-ELISA

SEC-MALS

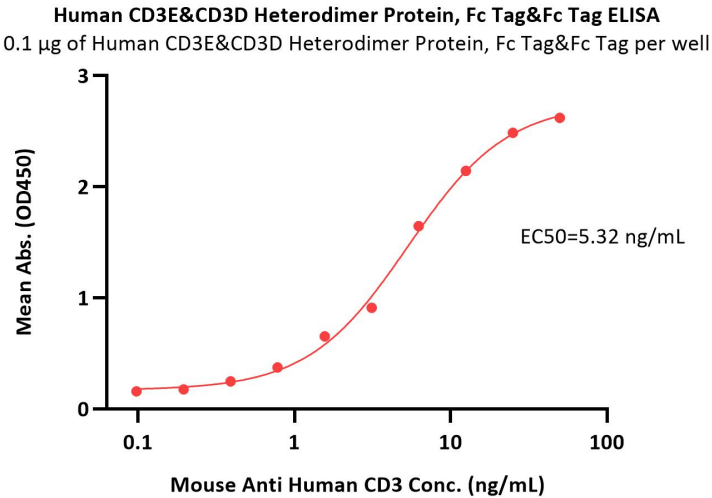
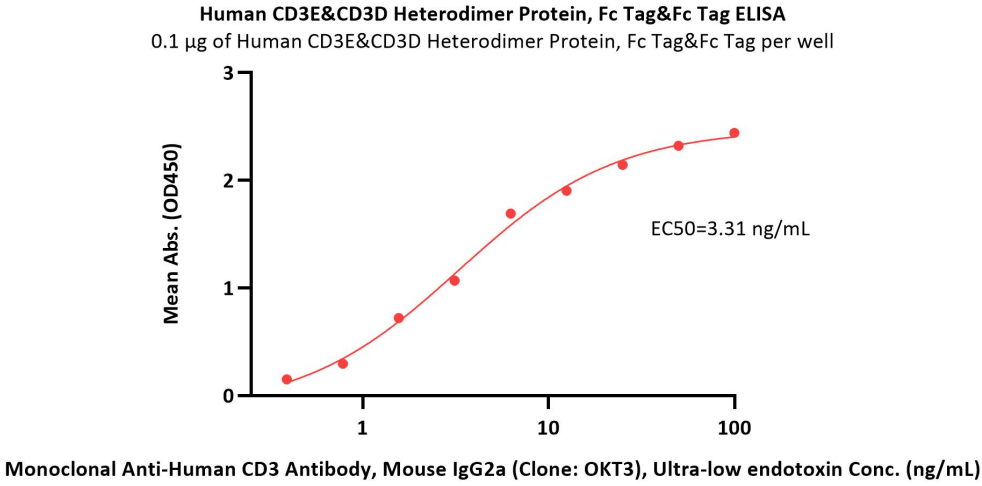


The purity of Human CD3E&CD3D Heterodimer Protein, Fc Tag&Fc Tag (Cat. No. CDD-H5255) is more than 90% and the molecular weight of this protein is around 75-85 kDa verified by SEC-MALS.
[Report](#)



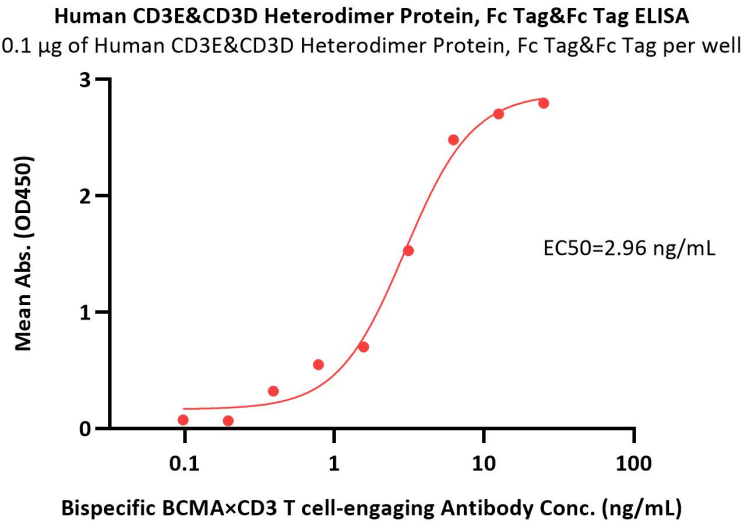
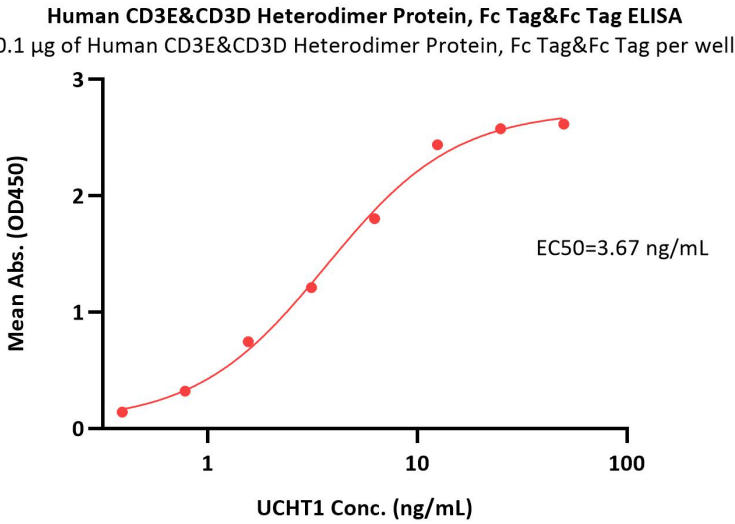
Human CD3 epsilon&CD3 delta Heterodimer Protein, Fc Tag&Fc Tag (MALS verified)

Catalog # CDD-H5255



Immobilized Human CD3E&CD3D Heterodimer Protein, Fc Tag&Fc Tag (Cat. No. CDD-H5255) at 1 µg/mL (100 µL/well) can bind Monoclonal Anti-Human CD3 Antibody, Mouse IgG2a (Clone: OKT3), premium grade (Cat. No. CDE-M120a) with a linear range of 0.8-6 ng/mL (QC tested).

Immobilized Human CD3E&CD3D Heterodimer Protein, Fc Tag&Fc Tag (Cat. No. CDD-H5255) at 1 µg/mL (100 µL/well) can bind Mouse Anti Human CD3 with a linear range of 0.8-6 ng/mL (Routinely tested).



Immobilized Human CD3E&CD3D Heterodimer Protein, Fc Tag&Fc Tag (Cat. No. CDD-H5255) at 1 µg/mL (100 µL/well) can bind UCHT1 with a linear range of 0.8-6 ng/mL (Routinely tested).

Immobilized Human CD3E&CD3D Heterodimer Protein, Fc Tag&Fc Tag (Cat. No. CDD-H5255) at 1 µg/mL (100 µL/well) can bind Bispecific BCMA×CD3 T cell-engaging Antibody with a linear range of 0.8-6 ng/mL (Routinely tested).

Background

T-cell surface glycoprotein CD3 delta & CD3 epsilon chain, also known as CD3D & CD3E or CD3D&CD3E respectively, are single-pass type I membrane proteins. CD3D, together with CD3- epsilon(CD3E) , CD3-gamma and CD3-zeta, and the T-cell receptor alpha/beta and gamma/delta heterodimers, forms the T cell receptor-CD3 complex. T cell receptor-CD3 complex plays an important role in coupling antigen recognition to several intracellular signal-transduction pathways.

