

Synonym

CD182,CDw128b,CMKAR2,IL8R2,IL8RA,IL8RB,CXCR2,CXC-R2,CXCR-2,GRO,MGSA receptor,IL-8R B

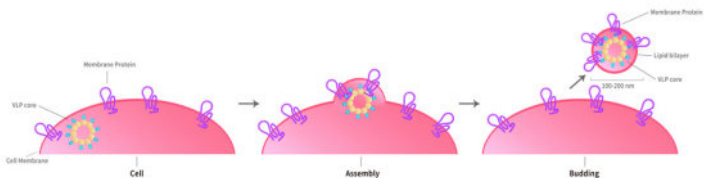
Source

Human CXCR2 Full Length Protein (VLP)(CX2-H52P4) is expressed from human 293 cells (HEK293). It contains AA Glu 2 - Leu 360 (Accession # [NP_001548.1](#)).

Predicted N-terminus: Asp

Molecular Characterization

Virus-like particles(VLPs) are formed by self-assembly of envelop/capsid proteins from viruses. Membrane Proteins can be constituted in-situ with VLPs produced from HEK293 cell cultures. These VLPs concentrate conformationally intact membrane proteins directly on the cell surface and produce soluble, high-concentration proteins perfect for immunization and antibody screening.



The VLPs provide the display of properly folded membrane proteins in their native cellular membrane in a compact size of 100~300 nm diameter (similar to the size of most viruses) making it optimal targets for dendritic cells in vivo and surface attachment for phage display.

Endotoxin

Less than 1.0 EU per µg by the LAL method / rFC method.

*The isotype control of empty/mock VLP (Cat. No. [VLP-N5213](#)) is sold separately and not included in protein, you can follow [this link](#) for product information.

Formulation

The VLPs are highly immunogenic, so the immunization strategy should be optimized (antigen dose, regimen and adjuvant).

Supplied as 0.2 µm filtered solution in PBS, Arginine, pH7.4 with trehalose as protectant.

Contact us for customized product form or formulation.

Shipping

This product is supplied and shipped with dry ice, please inquire the shipping cost.

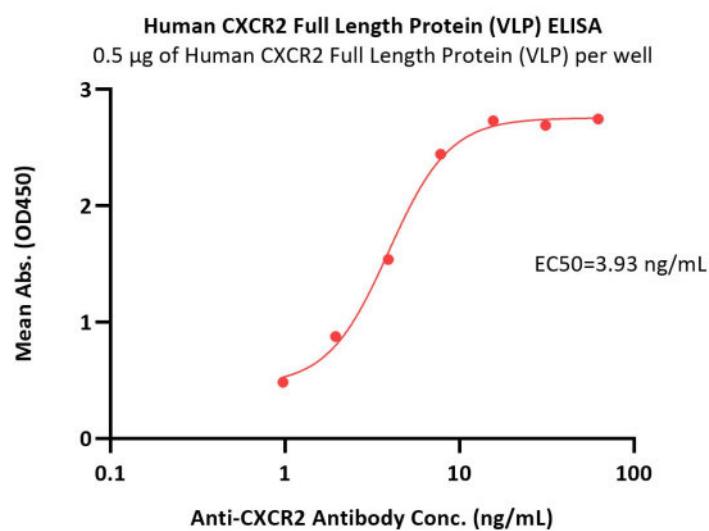
Storage

Please avoid repeated freeze-thaw cycles.

This product is stable after storage at:

- The product MUST be stored at -70°C or lower upon receipt;
- -70°C for 12 months under sterile conditions.

Bioactivity-ELISA



Immobilized Human CXCR2 Full Length Protein (VLP) (Cat. No. CX2-H52P4) at 5 µg/mL (100 µL/well) can bind Anti-CXCR2 Antibody with a

Discounts, Gifts,
and more!



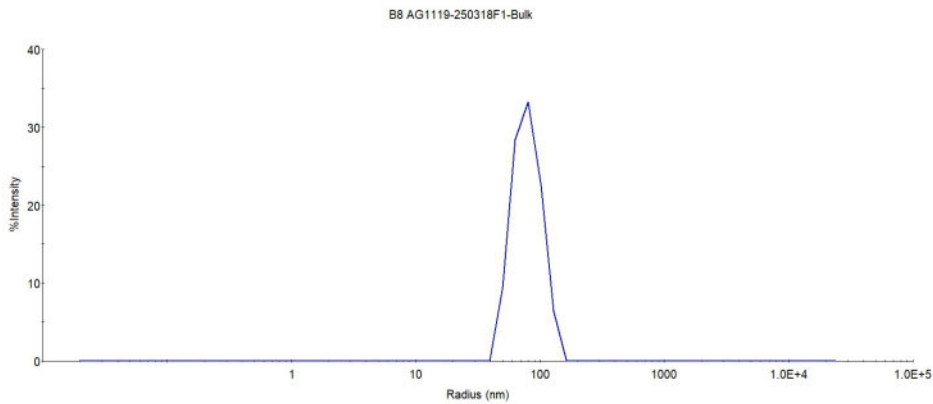
Human CXCR2 Full Length Protein (VLP)

Catalog # CX2-H52P4



linear range of 1-8 ng/mL (QC tested).

Identity-DLS



The mean peak Radius of VLP is 70-90 nm with more than 95% intensity as determined by dynamic light scattering (DLS).

Background

The protein encoded by this gene is a member of the G-protein-coupled receptor family. This protein is a receptor for interleukin 8 (IL8). It binds to IL8 with high affinity, and transduces the signal through a G-protein activated second messenger system. This receptor also binds to chemokine (C-X-C motif) ligand 1 (CXCL1/MGSA), a protein with melanoma growth stimulating activity, and has been shown to be a major component required for serum-dependent melanoma cell growth. This receptor mediates neutrophil migration to sites of inflammation. The angiogenic effects of IL8 in intestinal microvascular endothelial cells are found to be mediated by this receptor. Knockout studies in mice suggested that this receptor controls the positioning of oligodendrocyte precursors in developing spinal cord by arresting their migration. This gene, IL8RA, a gene encoding another high affinity IL8 receptor, as well as IL8RBP, a pseudogene of IL8RB, form a gene cluster in a region mapped to chromosome 2q33-q36. Alternatively spliced variants, encoding the same protein, have been identified. [provided by RefSeq, Nov 2009]

Discounts, Gifts,
and more!

