

Human DLL3 Protein, Llama IgG2b Fc Tag

Catalog # DL3-H525x



Synonym

Delta3,delta-like 3 (Drosophila),delta-like protein
3,DLL3,Pudgy,SCDO1,SCDO1delta3

Source

Human DLL3 Protein, Llama IgG2b Fc Tag(DL3-H525x) is expressed from human 293 cells (HEK293). It contains AA Ala 27 - Leu 492 (Accession # [Q9NYJ7-1](#)).
Predicted N-terminus: Ala 27

Molecular Characterization

DLL3(Ala 27 - Leu 492) Q9NYJ7-1	LlamaFc(Glu 1 - Ser 243) AAX73259.1
------------------------------------	----------------------------------------

This protein carries a llama IgG2b Fc tag at the C-terminus.

The protein has a calculated MW of 76.6 kDa. The protein migrates as 75-85 kDa under reducing (R) condition (SDS-PAGE) due to glycosylation.

Endotoxin

Less than 0.2 EU per µg by the LAL method / rFC method.

Purity

>90% as determined by SDS-PAGE.

Formulation

Lyophilized from 0.22 µm filtered solution in 50 mM Tris, 100 mM Glycine, 150 mM NaCl, pH7.5 with trehalose as protectant.

Contact us for customized product form or formulation.

Reconstitution

Please see Certificate of Analysis for specific instructions.

For best performance, we strongly recommend you to follow the reconstitution protocol provided in the CoA.

Storage

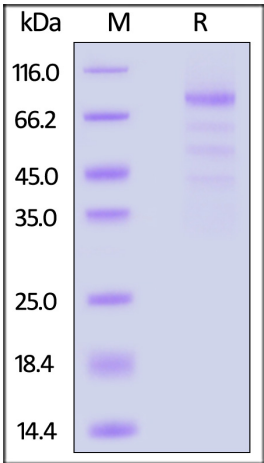
For long term storage, the product should be stored at lyophilized state at -20°C or lower.

Please avoid repeated freeze-thaw cycles.

This product is stable after storage at:

- 20°C to -70°C for 12 months in lyophilized state;
- 70°C for 3 months under sterile conditions after reconstitution.

SDS-PAGE



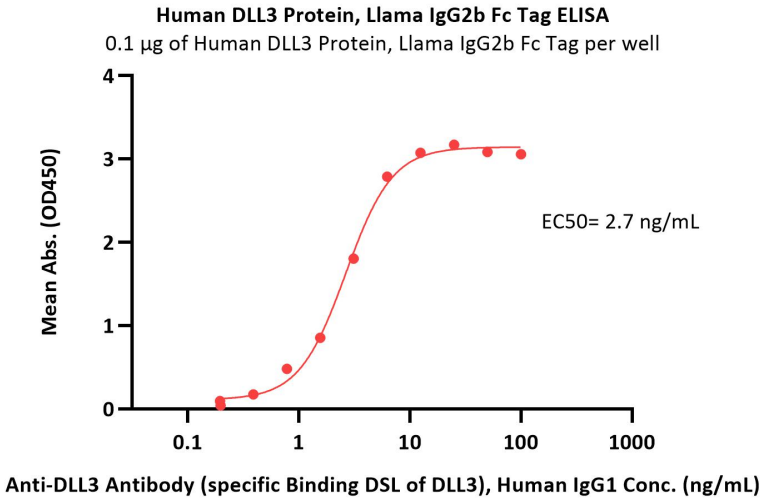
Human DLL3 Protein, Llama IgG2b Fc Tag on SDS-PAGE under reducing (R) condition. The gel was stained with Coomassie Blue. The purity of the protein is greater than 90%.

Bioactivity-ELISA

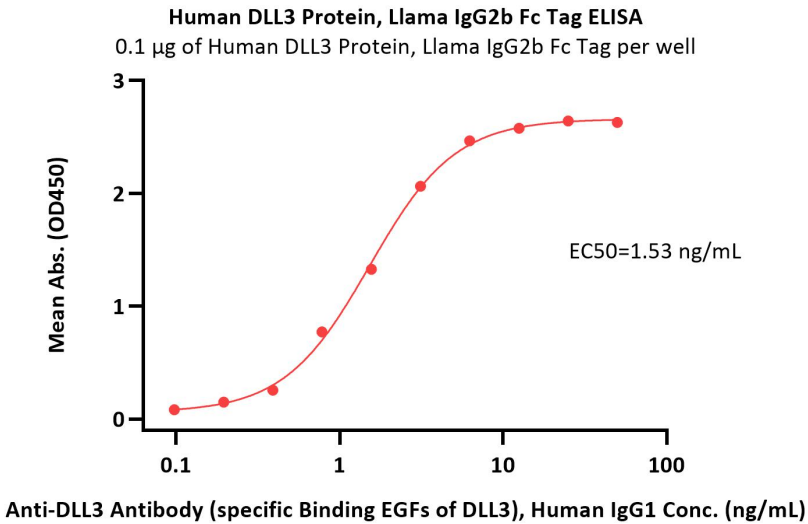


Human DLL3 Protein, Llama IgG2b Fc Tag

Catalog # DL3-H525x



Immobilized Human DLL3 Protein, Llama IgG2b Fc Tag (Cat. No. DL3-H525x) at 1 µg/mL (100 µL/well) can bind Anti-DLL3 Antibody (specific Binding DSL of DLL3), Human IgG1 (Cat. No. AM186) with a linear range of 0.39-6.25 ng/mL (QC tested).



Immobilized Human DLL3, Llama IgG2b Fc Tag (Cat. No. DL3-H525x) at 1 µg/mL (100 µL/well) can bind Anti-DLL3 Antibody (specific Binding EGFs of DLL3), Human IgG1 with a linear range of 0.2-3 ng/mL (Routinely tested).

Background

Delta-like protein 3 (DLL3) is a transmembrane protein that belongs to the Delta/Serrate/Lag-2 (DSL) family of Notch ligands. May be required to divert neurons along a specific differentiation pathway. Plays a role in the formation of somite boundaries during segmentation of the paraxial mesoderm. DLL3 protein is expressed on the surface of tumor cells but not in normal adult tissues.

