



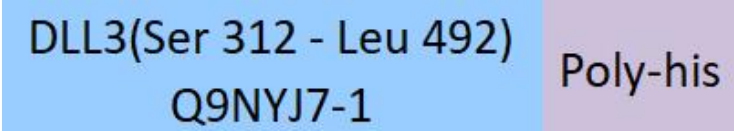
Synonym

Delta3,delta-like 3 (Drosophila),delta-like protein
3,DLL3,Pudgy,SCDO1,SCDO1delta3

Source

Human DLL3 (312-492) , His Tag(DL3-H52Hz) is expressed from human 293 cells (HEK293). It contains AA Ser 312 - Leu 492 (Accession # [Q9NYJ7-1](#)).
Predicted N-terminus: Ser 312

Molecular Characterization



This protein carries a polyhistidine tag at the C-terminus.
The protein has a calculated MW of 20.4 kDa. The protein migrates as 21-25 kDa under reducing (R) condition (SDS-PAGE) due to glycosylation.

Endotoxin

Less than 1.0 EU per µg by the LAL method / rFC method.

Purity

>90% as determined by SDS-PAGE.

Formulation

Supplied as 0.2 µm filtered solution in PBS, pH7.4.
Contact us for customized product form or formulation.

Shipping

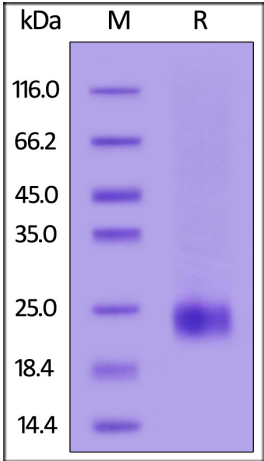
This product is supplied and shipped with dry ice, please inquire the shipping cost.

Storage

Please avoid repeated freeze-thaw cycles.
This product is stable after storage at:

- The product MUST be stored at -70°C or lower upon receipt;
- -70°C for 3 months under sterile conditions.

SDS-PAGE



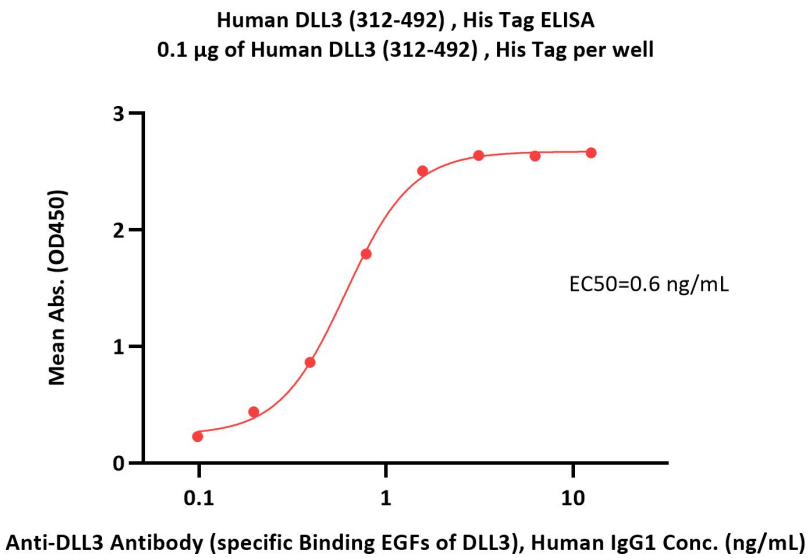
Human DLL3 (312-492) , His Tag on SDS-PAGE under reducing (R) condition. The gel was stained with Coomassie Blue. The purity of the protein is greater than 90%.

Bioactivity-ELISA



Human DLL3 (312-492) Protein, His Tag

Catalog # DL3-H52Hz



Immobilized Human DLL3 (312-492) , His Tag (Cat. No. DL3-H52Hz) at 1 µg/mL (100 µL/well) can bind Anti-DLL3 Antibody (specific Binding EGFs of DLL3), Human IgG1 with a linear range of 0.1-2 ng/mL (QC tested).

Background

Delta-like protein 3 (DLL3) is a transmembrane protein that belongs to the Delta/Serrate/Lag-2 (DSL) family of Notch ligands. May be required to divert neurons along a specific differentiation pathway. Plays a role in the formation of somite boundaries during segmentation of the paraxial mesoderm. DLL3 protein is expressed on the surface of tumor cells but not in normal adult tissues.

Discounts, Gifts,
and more!

