

Mouse DLL3 Protein, His Tag (HPLC verified)

Catalog # DL3-M52H9



Synonym

Delta3,delta-like 3 (Drosophila),delta-like protein
3,DLL3,Pudgy,SCDO1,SCDO1delta3

Source

Mouse DLL3, His Tag(DL3-M52H9) is expressed from human 293 cells (HEK293). It contains AA Ala 25 - Arg 488 (Accession # [O88516-1](#)).
Predicted N-terminus: Asp

Molecular Characterization

This protein carries a polyhistidine tag at the C-terminus and a fusion design at the N-terminus. The protein has a calculated MW of 118 kDa. The protein migrates as 100-115 kDa under reducing (R) condition (SDS-PAGE).

Endotoxin

Less than 1.0 EU per µg by the LAL method / rFC method.

Purity

>95% as determined by SDS-PAGE.

Formulation

Lyophilized from 0.22 µm filtered solution in PBS, pH7.4 with trehalose as protectant.
Contact us for customized product form or formulation.

Reconstitution

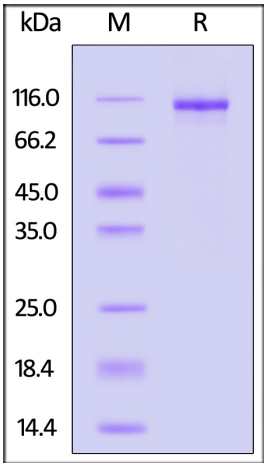
Please see Certificate of Analysis for specific instructions.
For best performance, we strongly recommend you to follow the reconstitution protocol provided in the CoA.

Storage

For long term storage, the product should be stored at lyophilized state at -20°C or lower.
Please avoid repeated freeze-thaw cycles.

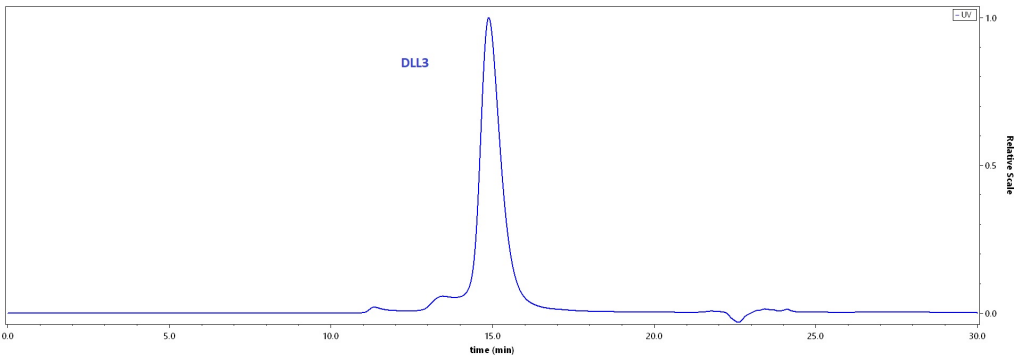
- This product is stable after storage at:
- 20°C to -70°C for 12 months in lyophilized state;
 - 70°C for 3 months under sterile conditions after reconstitution.

SDS-PAGE



Mouse DLL3, His Tag on SDS-PAGE under reducing (R) condition. The gel was stained with Coomassie Blue. The purity of the protein is greater than 95%.

SEC-HPLC



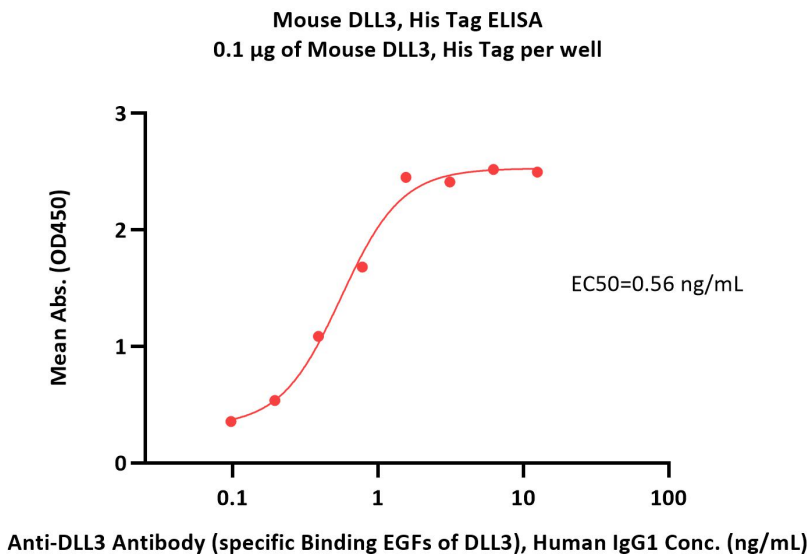
The purity of Mouse DLL3, His Tag (Cat. No. DL3-M52H9) was greater than 85% as determined by SEC-HPLC.

Bioactivity-ELISA

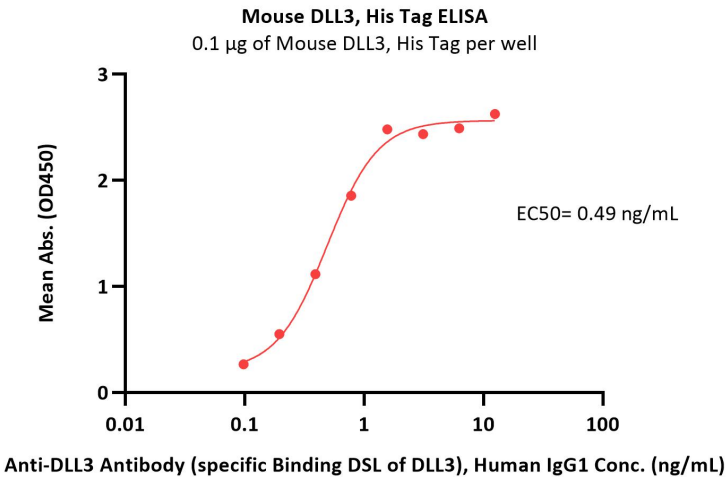


Mouse DLL3 Protein, His Tag (HPLC verified)

Catalog # DL3-M52H9

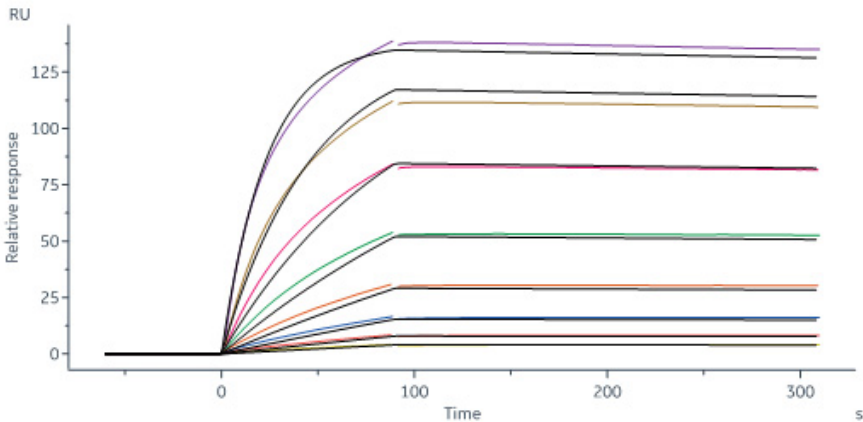


Immobilized Mouse DLL3, His Tag (Cat. No. DL3-M52H9) at 1 µg/mL (100 µL/well) can bind Anti-DLL3 Antibody (specific Binding EGFs of DLL3), Human IgG1 with a linear range of 0.1-2 ng/mL (QC tested).



Immobilized Mouse DLL3, His Tag (Cat. No. DL3-M52H9) at 1 µg/mL (100 µL/well) can bind Anti-DLL3 Antibody (specific Binding DSL of DLL3), Human IgG1 with a linear range of 0.1-2 ng/mL (Routinely tested).

Bioactivity-SPR



Bispecific T-cell Engager captured on Protein A Chip can bind Mouse DLL3, His Tag (Cat. No. DL3-M52H9) with an affinity constant of 1.13 nM as determined in a SPR assay (Biacore 8K) (Routinely tested).

Background

Delta-like protein 3 (DLL3) is a transmembrane protein that belongs to the Delta/Serrate/Lag-2 (DSL) family of Notch ligands. May be required to divert neurons along a specific differentiation pathway. Plays a role in the formation of somite boundaries during segmentation of the paraxial mesoderm. DLL3 protein is expressed on the surface of tumor cells but not in normal adult tissues.

