

Synonym

Delta3,delta-like 3 (Drosophila),delta-like protein  
3,DLL3,Pudgy,SCDO1,SCDO1delta3

Source

Rhesus macaque DLL3, His Tag(DL3-R52H4) is expressed from human 293 cells (HEK293). It contains AA Ala 27 - Arg 490 (Accession # [F6TFV4-1](#)).  
Predicted N-terminus: Ala 27

Molecular Characterization

DLL3(Ala 27 - Arg 490)  
F6TFV4-1

Poly-his

This protein carries a polyhistidine tag at the C-terminus.  
The protein has a calculated MW of 50.2 kDa. The protein migrates as 50-55 kDa when calibrated against [Star Ribbon Pre-stained Protein Marker](#) under reducing (R) condition (SDS-PAGE) due to glycosylation.

Endotoxin

Less than 1.0 EU per µg by the LAL method / rFC method.

Purity

>95% as determined by SDS-PAGE.

Formulation

Lyophilized from 0.22 µm filtered solution in PBS, pH7.4 with trehalose as protectant.  
Contact us for customized product form or formulation.

Reconstitution

Please see Certificate of Analysis for specific instructions.  
*For best performance, we strongly recommend you to follow the reconstitution protocol provided in the CoA.*

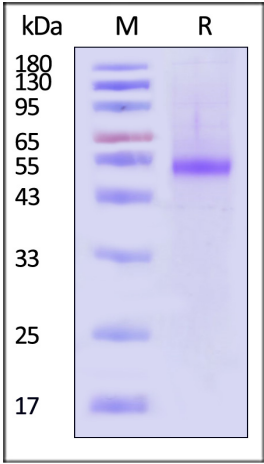
Storage

For long term storage, the product should be stored at lyophilized state at -20°C or lower.  
*Please avoid repeated freeze-thaw cycles.*

This product is stable after storage at:

- 20°C to -70°C for 12 months in lyophilized state;
- 70°C for 3 months under sterile conditions after reconstitution.

SDS-PAGE



Rhesus macaque DLL3, His Tag on SDS-PAGE under reducing (R) condition. The gel was stained with Coomassie Blue. The purity of the protein is greater than 95% (With [Star Ribbon Pre-stained Protein Marker](#)).

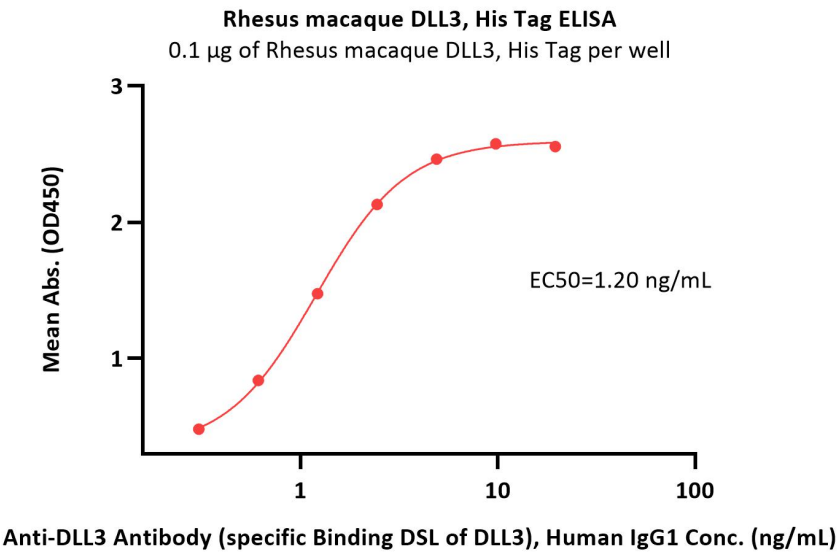
Bioactivity-ELISA

Discounts, Gifts,  
and more!



# Rhesus macaque DLL3 Protein, His Tag

Catalog # DL3-R52H4



Immobilized Rhesus macaque DLL3, His Tag (Cat. No. DL3-R52H4) at 1 µg/mL (100 µL/well) can bind Anti-DLL3 Antibody (specific Binding DSL of DLL3), Human IgG1 with a linear range of 0.3-2 ng/mL (QC tested).

## Background

Delta-like protein 3 (DLL3) is a transmembrane protein that belongs to the Delta/Serrate/Lag-2 (DSL) family of Notch ligands. May be required to divert neurons along a specific differentiation pathway. Plays a role in the formation of somite boundaries during segmentation of the paraxial mesoderm. DLL3 protein is expressed on the surface of tumor cells but not in normal adult tissues.

Discounts, Gifts,  
and more!

