

Synonym

EGFR,ERBB,ERBB1,HER1,PIG61,mENA

Source

Human EGF R, Llama IgG2b Fc Tag(EGR-H5259) is expressed from human 293 cells (HEK293). It contains AA Leu 25 - Ser 645 (Accession # [P00533-1](#)). Predicted N-terminus: Leu 25

Molecular Characterization

EGF R(Leu 25 - Ser 645) P00533-1	LlamaFc(Glu1 - Ser243) AAX73259.1
-------------------------------------	--------------------------------------

This protein carries a llama IgG2b Fc tag at the C-terminus.

The protein has a calculated MW of 96.4 kDa. The protein migrates as 115-150 kDa under reducing (R) condition (SDS-PAGE) due to glycosylation.

Endotoxin

Less than 0.01 EU per µg by the LAL method / rFC method.

Purity

>95% as determined by SDS-PAGE.

Formulation

Lyophilized from 0.22 µm filtered solution in 50 mM Tris, 100 mM Glycine, 25 mM Arginine, 150 mM NaCl, pH7.5 with trehalose as protectant.

Contact us for customized product form or formulation.

Reconstitution

Please see Certificate of Analysis for specific instructions.

For best performance, we strongly recommend you to follow the reconstitution protocol provided in the CoA.

Storage

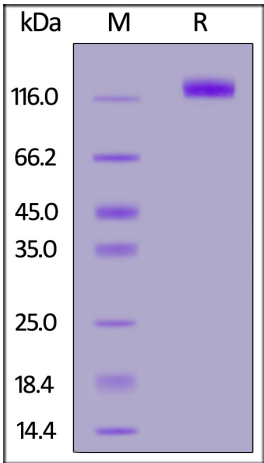
For long term storage, the product should be stored at lyophilized state at -20°C or lower.

Please avoid repeated freeze-thaw cycles.

This product is stable after storage at:

- 20°C to -70°C for 12 months in lyophilized state;
- 70°C for 3 months under sterile conditions after reconstitution.

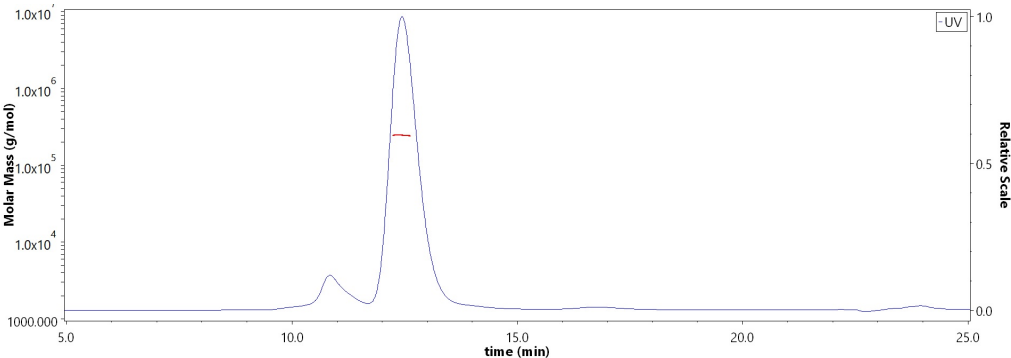
SDS-PAGE



Human EGF R, Llama IgG2b Fc Tag on SDS-PAGE under reducing (R) condition. The gel was stained with Coomassie Blue. The purity of the protein is greater than 95%.

Bioactivity-ELISA

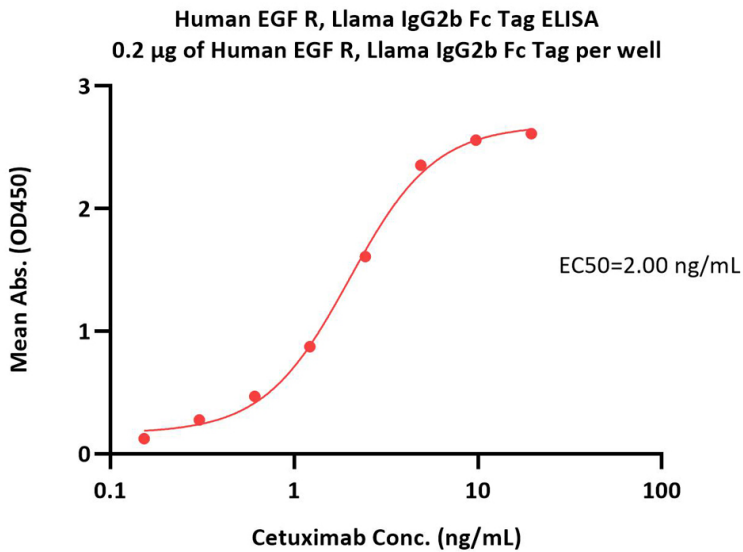
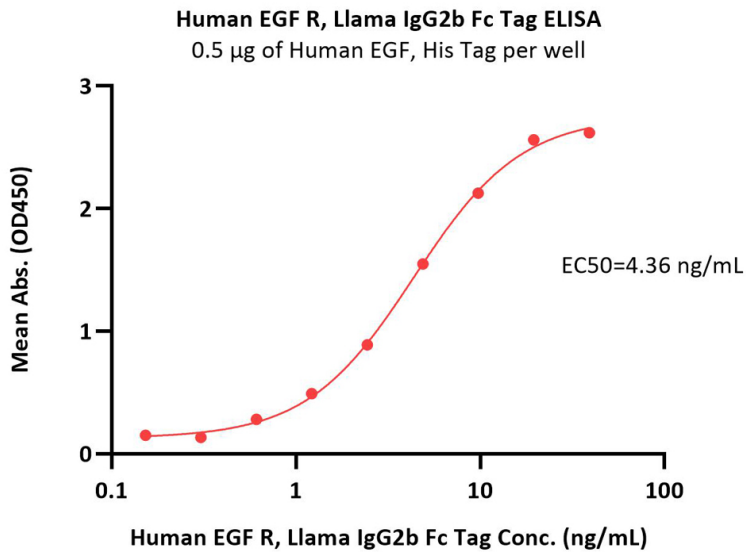
SEC-MALS



The purity of Human EGF R, Llama IgG2b Fc Tag (Cat. No. EGR-H5259) is more than 85% and the molecular weight of this protein is around 220-265 kDa verified by SEC-MALS.

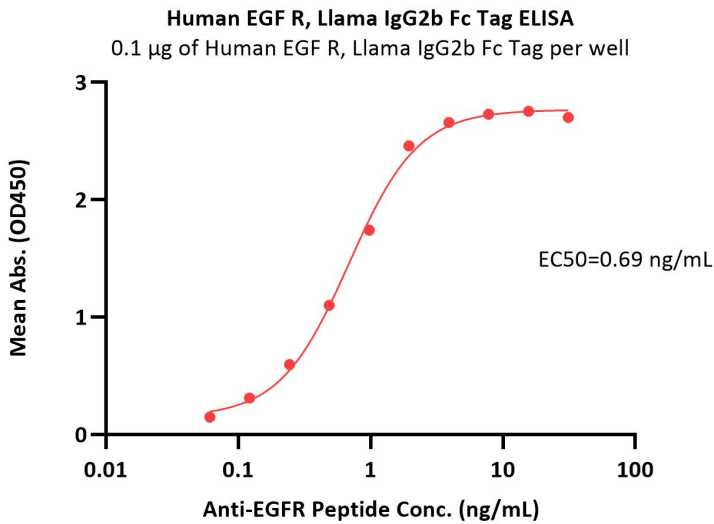
[Report](#)





Immobilized Human EGF, His Tag (Cat. No. EGF-H52H3) at 5 µg/mL (100 µL/well) can bind Human EGF R, Llama IgG2b Fc Tag (Cat. No. EGR-H5259) with a linear range of 0.2-5 ng/mL (QC tested).

Immobilized Human EGF R, Llama IgG2b Fc Tag (Cat. No. EGR-H5259) at 2 µg/mL (100 µL/well) can bind Cetuximab with a linear range of 0.3-5 ng/mL (Routinely tested).



Immobilized Human EGF R, Llama IgG2b Fc Tag (Cat. No. EGR-H5259) at 1 µg/mL (100 µL/well) can bind Anti-EGFR Peptide with a linear range of 0.06-2 ng/mL (Routinely tested).

Background

The epidermal growth factor receptor (EGFR; ErbB-1; HER1 in humans) is the cell-surface receptor for members of the epidermal growth factor family (EGF-family) of extracellular protein ligands. The epidermal growth factor receptor is a member of the ErbB family of receptors, a subfamily of four closely related receptor tyrosine kinases: EGFR (ErbB-1), HER2/c-neu (ErbB-2), Her 3 (ErbB-3) and Her 4 (ErbB-4). Mutations affecting EGFR expression or activity could result in cancer.

