

Background

Receptor tyrosine kinase binding ligands of the EGF family and activating several signaling cascades to convert extracellular cues into appropriate cellular responses. Known ligands include EGF, TGFA/TGF-alpha, AREG, epigen/EPGN, BTC/betacellulin, epiregulin/EREG and HBEGF/heparin-binding EGF. Ligand binding triggers receptor homo- and/or heterodimerization and autophosphorylation on key cytoplasmic residues. The phosphorylated receptor recruits adapter proteins like GRB2 which in turn activates complex downstream signaling cascades. Activates at least 4 major downstream signaling cascades including the RAS-RAF-MEK-ERK, PI3 kinase-AKT, PLCgamma-PKC and STATs modules 13. May also activate the NF-kappa-B signaling cascade. Also directly phosphorylates other proteins like RGS16, activating its GTPase activity and probably coupling the EGF receptor signaling to the G protein-coupled receptor signaling. Also phosphorylates MUC1 and increases its interaction with SRC and CTNNB1/beta-catenin. Positively regulates cell migration via interaction with CCDC88A/GIV which retains EGFR at the cell membrane following ligand stimulation, promoting EGFR signaling which triggers cell migration. Plays a role in enhancing learning and memory performance (By similarity).

Host Species

Rabbit

Clone

5A6

Application

IHC

Property

1: 1000

State

Liquid

Positive Control

Human placentaTissues

Clonality

Monoclonal

Synonym

ERBB, ERBB1

Research Field

Cancer Drug Targets

Source

Rabbit

Isotype

IgG

Storage

Shipped at 4°C. Store at +4°C short term (1-2 weeks). Upon delivery aliquot. Store at -20°C long term. Avoid freeze / thaw cycle. The shelf life is 30 days from the date of opening.

Typical Data

Control Sample

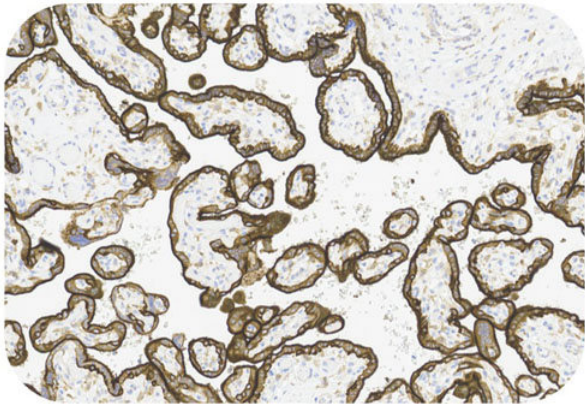
Discounts, Gifts,  
and more!



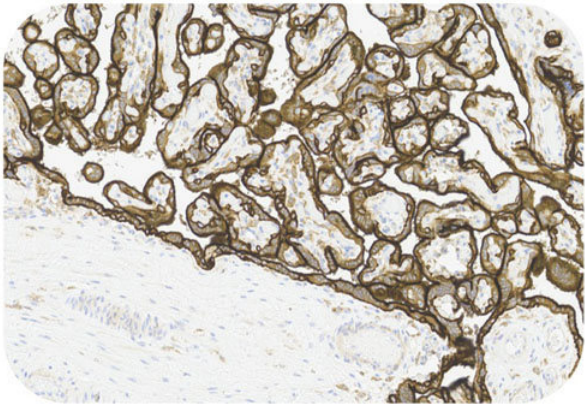


Recombinant Monoclonal Anti-EGFR Antibody, Rabbit (5A6)

Catalog # HGS-S264



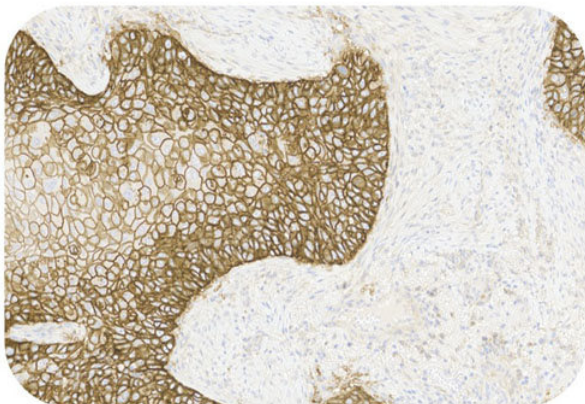
Immunohistochemistry (Formalin/PFA-fixed paraffin-embedded sections) - Recombinant Monoclonal Anti-EGFR Antibody, Rabbit (5A6) (HGS-S264)  
Human Placenta Tissue, 20X



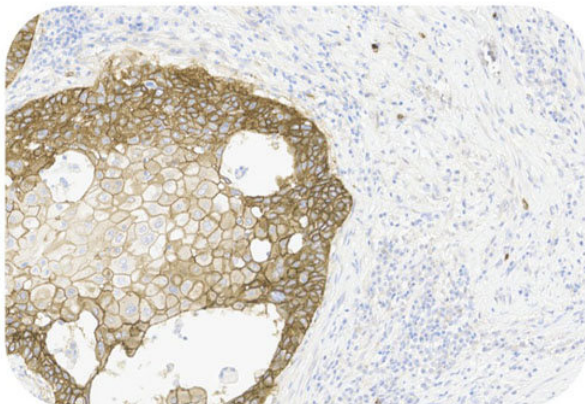
Immunohistochemistry (Formalin/PFA-fixed paraffin-embedded sections) - Recombinant Monoclonal Anti-EGFR Antibody, Rabbit (5A6) (HGS-S264)  
Human Placenta Tissue, 20X

**Immunohistochemical analysis of paraffin embedded Human tonsil tissue labelled with HGS-S264 at 1/1000 dilution.**  
Perform heat mediated antigen retrieval with Tris/EDTA buffer pH 9.0 before commencing with IHC staining protocol.

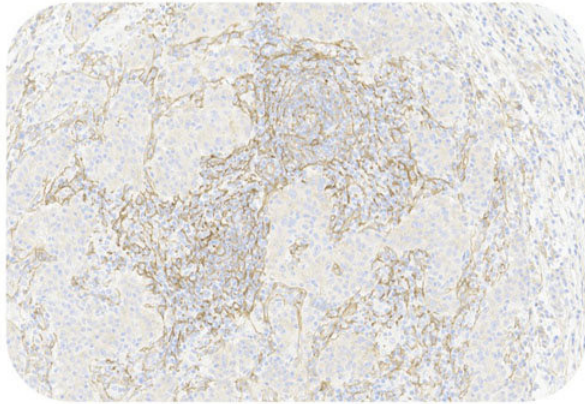
Cancer Sample



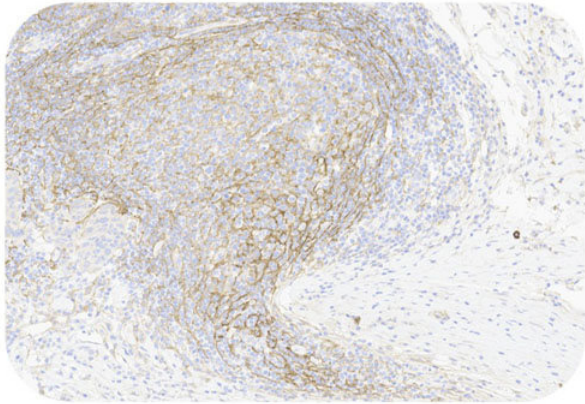
Immunohistochemistry (Formalin/PFA-fixed paraffin-embedded sections) - Recombinant Monoclonal Anti-EGFR Antibody, Rabbit (5A6) (HGS-S264)  
Human Esophagus Cancer Tissue, 20X



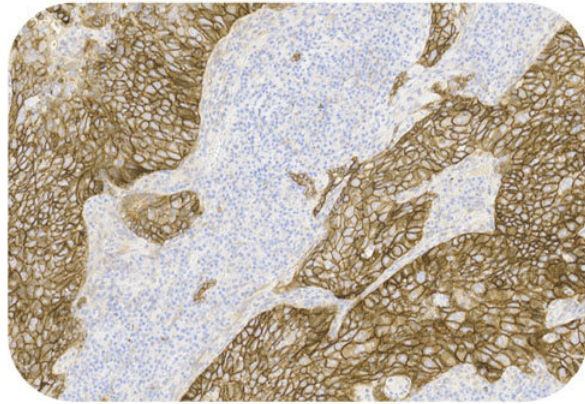
Immunohistochemistry (Formalin/PFA-fixed paraffin-embedded sections) - Recombinant Monoclonal Anti-EGFR Antibody, Rabbit (5A6) (HGS-S264)  
Human Esophagus Cancer Tissue, 20X



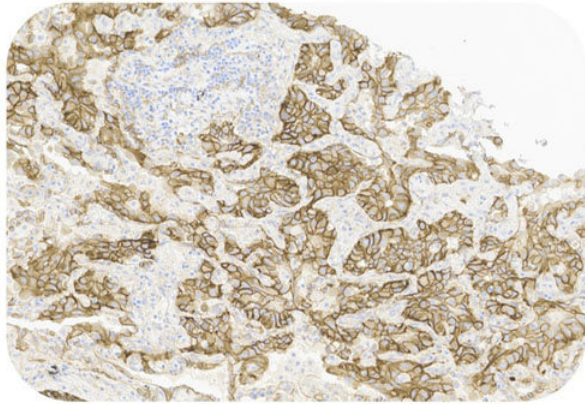
Immunohistochemistry (Formalin/PFA-fixed paraffin-embedded sections) - Recombinant Monoclonal Anti-EGFR Antibody, Rabbit (5A6) (HGS-S264)  
Human Gastric Cancer Tissue, 20X



Immunohistochemistry (Formalin/PFA-fixed paraffin-embedded sections) - Recombinant Monoclonal Anti-EGFR Antibody, Rabbit (5A6) (HGS-S264)  
Human Gastric Cancer Tissue, 20X



Immunohistochemistry (Formalin/PFA-fixed paraffin-embedded sections) - Recombinant Monoclonal Anti-EGFR Antibody, Rabbit (5A6) (HGS-S264)  
Human Lung Cancer Tissue, 20X



Immunohistochemistry (Formalin/PFA-fixed paraffin-embedded sections) - Recombinant Monoclonal Anti-EGFR Antibody, Rabbit (5A6) (HGS-S264)  
Human Lung Cancer Tissue, 20X

**Immunohistochemical analysis of paraffin embedded human cancer tissue labelled with HGS-S264 at 1/1000 dilution.**  
Perform heat mediated antigen retrieval with Tris/EDTA buffer pH 9.0 before commencing with IHC staining protocol.





Recombinant Monoclonal Anti-EGFR Antibody, Rabbit (5A6)

Catalog # HGS-S264

