

Synonym

IL-15 R alpha,CD215,IL15RA,IL-15RA,IL-15R-alpha

Source

FITC-Labeled Human IL-15 R alpha, Fc Tag(ILA-HF255) is expressed from human 293 cells (HEK293). It contains AA Ile 31-Thr 205 (Accession # [Q13261-1](#)).

Predicted N-terminus: Ile 31

Molecular Characterization

IL-15 R alpha(Ile 31-Thr 205) Q13261-1	Fc(Pro 100 - Lys 330) P01857
---	---------------------------------

This protein carries a human IgG1 Fc tag at the C-terminus.

The protein has a calculated MW of 44.8 kDa. The protein migrates as 65-80 kDa when calibrated against [Star Ribbon Pre-stained Protein Marker](#) under reducing (R) condition (SDS-PAGE) due to glycosylation.

Conjugate

FITC

Excitation source: 488 nm spectral line, argon-ion laser

Excitation Wavelength: 488 nm

Emission Wavelength: 535 nm

Labeling

The primary amines in the side chains of lysine residues and the N-terminus of the protein are conjugated with FITC using standard chemical labeling method. The residual FITC is removed by molecular sieve treatment during purification process.

Protein Ratio

The FITC to protein molar ratio is 1.5-3.5.

Purity

>95% as determined by SDS-PAGE.

Formulation

Lyophilized from 0.22 µm filtered solution in PBS, 0.2 M Arginine, pH7.4 with trehalose as protectant.

Contact us for customized product form or formulation.

Reconstitution

Please see Certificate of Analysis for specific instructions.

For best performance, we strongly recommend you to follow the reconstitution protocol provided in the CoA.

Storage

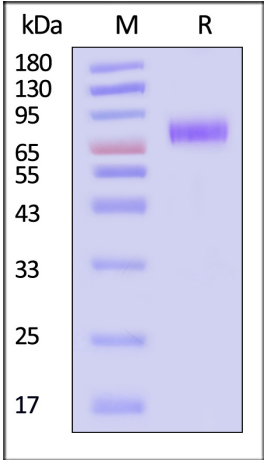
For long term storage, the product should be stored at lyophilized state at -20°C or lower.

Please protect from light and avoid repeated freeze-thaw cycles.

This product is stable after storage at:

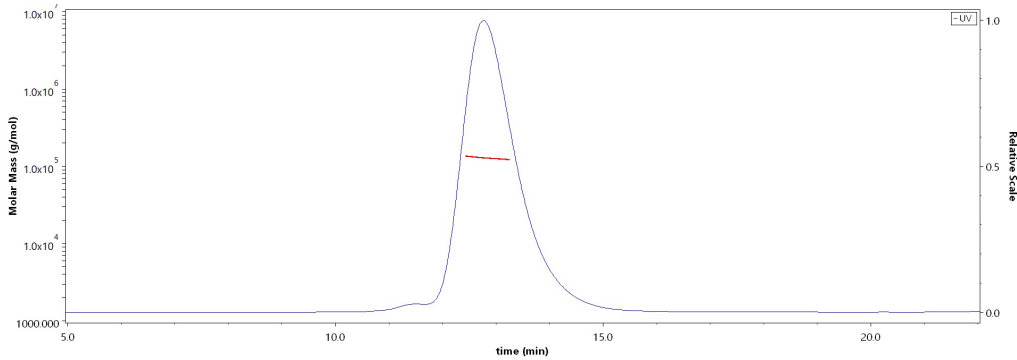
- 20°C to -70°C for 12 months in lyophilized state;
- 70°C for 3 months under sterile conditions after reconstitution.

SDS-PAGE



FITC-Labeled Human IL-15 R alpha, Fc Tag on SDS-PAGE under reducing (R) condition. The gel was stained with Coomassie Blue. The purity of the

SEC-MALS



The purity of FITC-Labeled Human IL-15 R alpha, Fc Tag (Cat. No. ILA-HF255) is more than 85% and the molecular weight of this protein is around

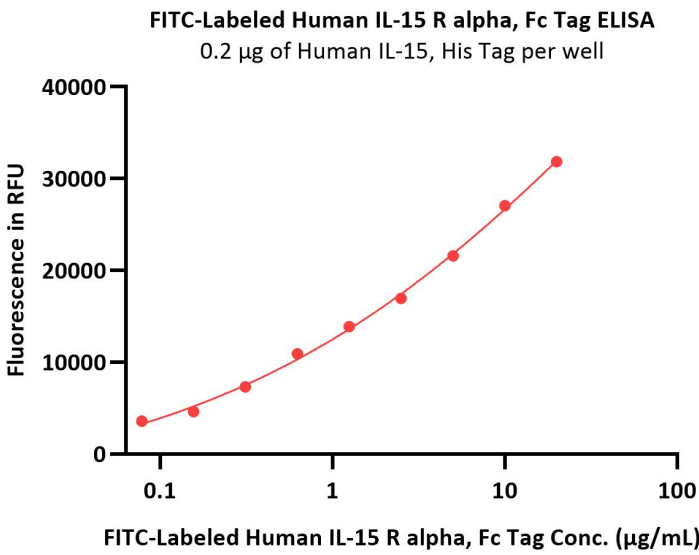




protein is greater than 95% (With [Star Ribbon Pre-stained Protein Marker](#)).

115-140 kDa verified by SEC-MALS.
[Report](#)

Bioactivity-ELISA



Immobilized Human IL-15, His Tag (Cat. No. IL5-H52H8) at 2 µg/mL (100 µL/well) can bind FITC-Labeled Human IL-15 R alpha, Fc Tag (Cat. No. ILA-HF255) with a linear range of 0.078-5 µg/mL (QC tested).

Background

IL15R is a heterotrimer of IL15RA, IL2RB and IL2RG. IL-15RA, also known as CD215, IL-15 R alpha, is a widely expressed 60 kDa transmembrane glycoprotein. High-affinity receptor for interleukin-15. Can signal both in cis and trans where IL15R from one subset of cells presents IL15 to neighboring IL2RG-expressing cells. Expression of different isoforms may alter or interfere with signal transduction. An interleukin (IL)-15 superagonist/IL-15 receptor α fusion complex (IL-15SA/IL-15RA; ALT-803) activates the IL-15 receptor on CD8 T cells and NK cells, and has shown significant anti-tumor. Signal transduction involves SYK. Higher levels of soluble sIL-15RA form in comparison with membrane-bound forms is present in all brain structures.

Discounts, Gifts,
and more!

