

Human MAT2A Protein, His Tag (active enzyme)

Catalog # MAA-H51H3



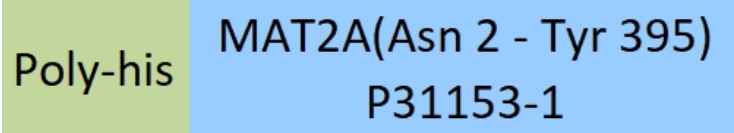
Synonym

MATA2, MATII, SAMS2

Source

Human MAT2A Protein, His Tag(MAA-H51H3) is expressed from E. coli cells. It contains AA Asn 2 - Tyr 395 (Accession # [P31153-1](#)).  
Predicted N-terminus: Met

Molecular Characterization



This protein carries a polyhistidine tag at the N-terminus.  
The protein has a calculated MW of 45.5 kDa. The protein migrates as 45-50 kDa when calibrated against [Star Ribbon Pre-stained Protein Marker](#) under reducing (R) condition (SDS-PAGE).

Endotoxin

Less than 1.0 EU per µg by the LAL method / rFC method.

Purity

>90% as determined by SDS-PAGE.

Formulation

Supplied as 0.2 µm filtered solution in 50 mM Tris, 150 mM NaCl, pH8.0 with glycerol as protectant.

Contact us for customized product form or formulation.

Shipping

*This product is supplied and shipped with dry ice, please inquire the shipping cost.*

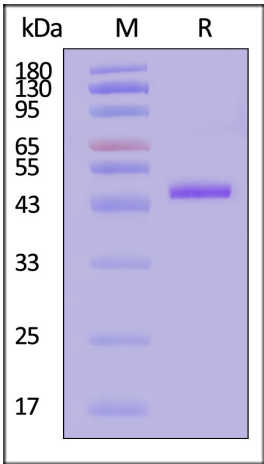
Storage

*Please avoid repeated freeze-thaw cycles.*

This product is stable after storage at:

- The product MUST be stored at -70°C or lower upon receipt;
- -70°C for 3 months under sterile conditions.

SDS-PAGE



Human MAT2A Protein, His Tag on SDS-PAGE under reducing (R) condition. The gel was stained with Coomassie Blue. The purity of the protein is greater than 90% (With [Star Ribbon Pre-stained Protein Marker](#)).

Bioactivity

Measured via hydrolysis of ATP during synthesis of S-adenosylmethionine. The specific activity is >200 pmol/min/µg (QC tested).

Background

The protein encoded by this gene catalyzes the production of S-adenosylmethionine (AdoMet) from methionine and ATP. AdoMet is the key methyl donor in cellular processes. [provided by RefSeq, Jun 2011]

