



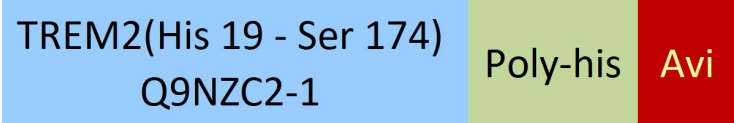
Synonym

Triggering receptor expressed on myeloid cells 2,TREM2,TREM-2

Source

Biotinylated Human TREM2, His,Avitag(TR2-H82E7) is expressed from human 293 cells (HEK293). It contains AA His 19 - Ser 174 (Accession # [Q9NZC2-1](#)).
Predicted N-terminus: His 19

Molecular Characterization



This protein carries a polyhistidine tag at the C-terminus, followed by an Avi tag (Avitag™).

The protein has a calculated MW of 21.0 kDa. The protein migrates as 29-40 kDa when calibrated against [Star Ribbon Pre-stained Protein Marker](#) under reducing (R) condition (SDS-PAGE) due to glycosylation.

Labeling

Biotinylation of this product is performed using Avitag™ technology. Briefly, the single lysine residue in the Avitag is enzymatically labeled with biotin.

Protein Ratio

Passed as determined by the HABA assay / binding ELISA.

Purity

>90% as determined by SDS-PAGE.

Formulation

Lyophilized from 0.22 µm filtered solution in PBS, pH7.4 with trehalose as protectant.

Contact us for customized product form or formulation.

Reconstitution

Please see Certificate of Analysis for specific instructions.

For best performance, we strongly recommend you to follow the reconstitution protocol provided in the CoA.

Storage

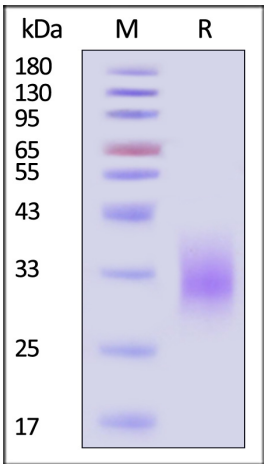
For long term storage, the product should be stored at lyophilized state at -20°C or lower.

Please avoid repeated freeze-thaw cycles.

This product is stable after storage at:

- -20°C to -70°C for 12 months in lyophilized state;
- -70°C for 3 months under sterile conditions after reconstitution.

SDS-PAGE

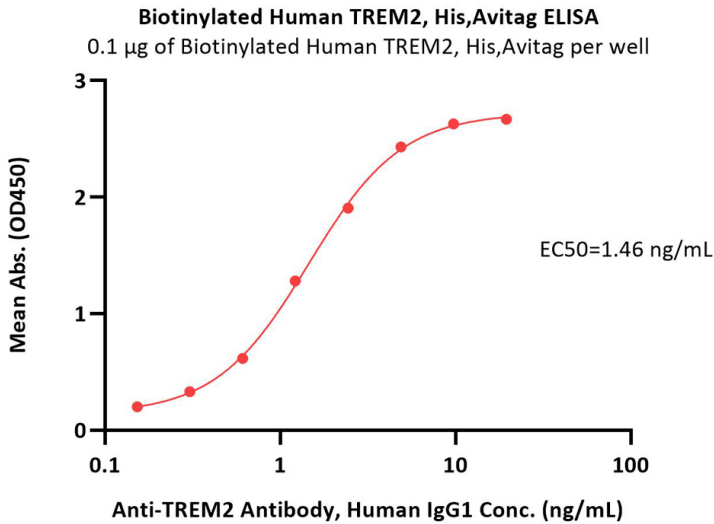


Biotinylated Human TREM2, His,Avitag on SDS-PAGE under reducing (R) condition. The gel was stained with Coomassie Blue. The purity of the protein is greater than 90% (With [Star Ribbon Pre-stained Protein Marker](#)).

Bioactivity-ELISA

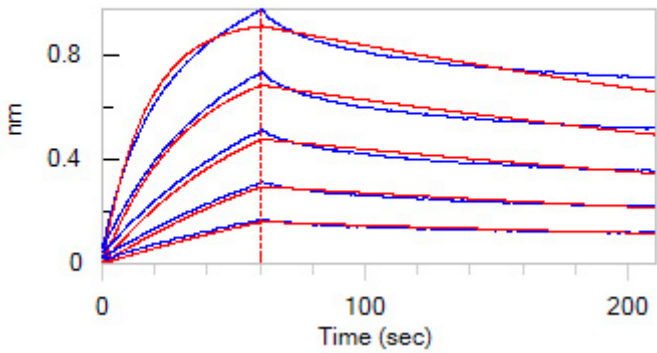
Discounts, Gifts,
and more!



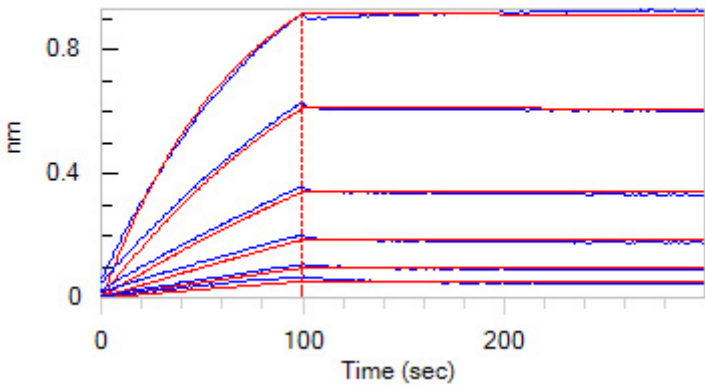


Immobilized Biotinylated Human TREM2, His,Avitag (Cat. No. TR2-H82E7) at 1 µg/mL (100 µL/well) on streptavidin (Cat. No. STN-N5116) precoated (2 µg/well) plate can bind Anti-TREM2 Antibody, Human IgG1 with a linear range of 0.2-2 ng/mL (QC tested).

Bioactivity-BLI



Loaded Biotinylated Human TREM2, His,Avitag (Cat. No. TR2-H82E7) on SA Biosensor, can bind Human APOE3, His Tag (Cat. No. APE-H5246) with an affinity constant of 37.1 nM as determined in BLI assay (ForteBio Octet Red96e) (Routinely tested).



Loaded Biotinylated Human TREM2, His,Avitag (Cat. No. TR2-H82E7) on SA Biosensor, can bind Human APOE2 (R154S), His Tag (Cat. No. APE-H5256) with an affinity constant of 2.08 nM as determined in BLI assay (ForteBio Octet Red96e) (Routinely tested).

Background

Triggering receptor expressed on myeloid cells 2 (TREM2) is a cell surface receptor of the immunoglobulin superfamily. The TREM2 is found in various tissue macrophages, such as CNS microglia, bone osteoclasts, alveolar, peritoneal and intestinal macrophages. TREM2 is also present on cultured bone marrow-derived macrophages and monocyte-derived dendritic cells. Some research have identified a rare variant of TREM2 that is a risk factor for Alzheimer disease (AD), which is the most common form of late-onset dementia. The extracellular region of TREM2 contains a single immunoglobulin superfamily domain and binds polyanionic ligands, such as bacterial lipopolysaccharide (LPS) and phospholipids⁸. Upon ligand binding, TREM2 transmits intracellular signals through an adaptor, DAP12 (also known as TYRO protein tyrosine kinase-binding protein (TYROBP)), which is associated with the transmembrane region of TREM2 and which recruits the protein tyrosine kinase SYK through its cytosolic immunoreceptor tyrosine-based activation motifs (ITAMs). TREM2 is a pro-tumorigenic marker of tumor-infiltrating macrophages in mouse models and human tumors that can be targeted to curb tumor growth and improve the efficacy of checkpoint blockade therapy while remodeling the landscape of tumor-infiltrating macrophages.

