

Mouse TREM2 Protein, Fc Tag

Catalog # TR2-M5254



Synonym

Triggering receptor expressed on myeloid cells 2,TREM2,TREM-2

Source

Mouse TREM2, Fc Tag(TR2-M5254) is expressed from human 293 cells (HEK293). It contains AA Leu 19 - Ser 171 (Accession # [Q99NH8-1](#)).
Predicted N-terminus: Leu 19

Molecular Characterization

TREM2(Leu 19-Ser 171) Q99NH8-1	Fc(Pro 100 - Lys 330) P01857
-----------------------------------	---------------------------------

This protein carries a human IgG1 Fc tag at the C-terminus.
The protein has a calculated MW of 43.2 kDa. The protein migrates as 55-65 kDa under reducing (R) condition (SDS-PAGE) due to glycosylation.

Endotoxin

Less than 1.0 EU per µg by the LAL method / rFC method.

Purity

>90% as determined by SDS-PAGE.

Formulation

Lyophilized from 0.22 µm filtered solution in 50 mM Tris, 100 mM Glycine, 25 mM Arginine, 150 mM NaCl, pH7.5 with trehalose as protectant.

Contact us for customized product form or formulation.

Reconstitution

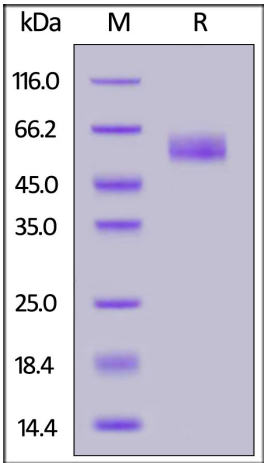
Please see Certificate of Analysis for specific instructions.
For best performance, we strongly recommend you to follow the reconstitution protocol provided in the CoA.

Storage

For long term storage, the product should be stored at lyophilized state at -20°C or lower.
Please avoid repeated freeze-thaw cycles.

- This product is stable after storage at:
- 20°C to -70°C for 12 months in lyophilized state;
 - 70°C for 3 months under sterile conditions after reconstitution.

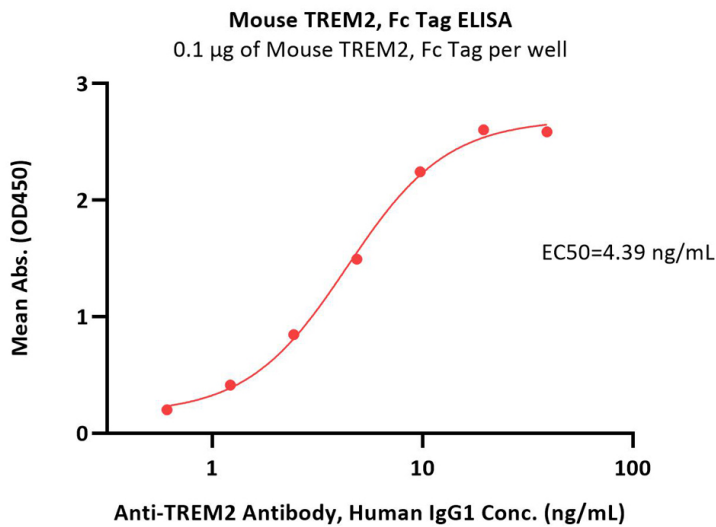
SDS-PAGE



Mouse TREM2, Fc Tag on SDS-PAGE under reducing (R) condition. The gel was stained with Coomassie Blue. The purity of the protein is greater than 90%.

Bioactivity-ELISA





Immobilized Mouse TREM2, Fc Tag (Cat. No. TR2-M5254) at 1 µg/mL (100 µL/well) can bind Anti-TREM2 Antibody, Human IgG1 with a linear range of 0.6-5 ng/mL (QC tested).

Background

Triggering receptor expressed on myeloid cells 2 (TREM2) is a cell surface receptor of the immunoglobulin superfamily. The TREM2 is found in various tissue macrophages, such as CNS microglia, bone osteoclasts, alveolar, peritoneal and intestinal macrophages. TREM2 is also present on cultured bone marrow-derived macrophages and monocyte-derived dendritic cells. Some research have identified a rare variant of TREM2 that is a risk factor for Alzheimer disease (AD), which is the most common form of late-onset dementia. The extracellular region of TREM2 contains a single immunoglobulin superfamily domain and binds polyanionic ligands, such as bacterial lipopolysaccharide (LPS) and phospholipids⁸. Upon ligand binding, TREM2 transmits intracellular signals through an adaptor, DAP12 (also known as TYRO protein tyrosine kinase-binding protein (TYROBP)), which is associated with the transmembrane region of TREM2 and which recruits the protein tyrosine kinase SYK through its cytosolic immunoreceptor tyrosine-based activation motifs (ITAMs). TREM2 is a pro-tumorigenic marker of tumor-infiltrating macrophages in mouse models and human tumors that can be targeted to curb tumor growth and improve the efficacy of checkpoint blockade therapy while remodeling the landscape of tumor-infiltrating macrophages.

