

Synonym

TSLP R,CRLF2,IL-XR,ILXR,p2RY8,CRLF2 fusion,TSLP receptor,TSLPR,CRL2,CRLF2Y,Cytokine receptor-like 2

Source

Human TSLP R, Fc Tag(TSR-H525a) is expressed from human 293 cells (HEK293). It contains AA Gly 25 - Lys 231 (Accession # [Q9HC73-1](#)).
Predicted N-terminus: Gly 25

Molecular Characterization

TSLP R(Gly 25 - Lys 231) Q9HC73-1	Fc(Pro 100 - Lys 330) P01857
--------------------------------------	---------------------------------

This protein carries a human IgG1 Fc tag at the C-terminus.

The protein has a calculated MW of 50.4 kDa. The protein migrates as 60-65 kDa when calibrated against [Star Ribbon Pre-stained Protein Marker](#) under reducing (R) condition (SDS-PAGE) due to glycosylation.

Endotoxin

Less than 1.0 EU per µg by the LAL method / rFC method.

Purity

>95% as determined by SDS-PAGE.

>90% as determined by SEC-MALS.

Formulation

Lyophilized from 0.22 µm filtered solution in Tris with Glycine, Arginine and NaCl, pH7.5 with trehalose as protectant.

Contact us for customized product form or formulation.

Reconstitution

Please see Certificate of Analysis for specific instructions.

For best performance, we strongly recommend you to follow the reconstitution protocol provided in the CoA.

Storage

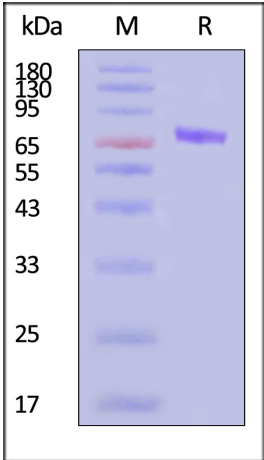
For long term storage, the product should be stored at lyophilized state at -20°C or lower.

Please avoid repeated freeze-thaw cycles.

This product is stable after storage at:

- 20°C to -70°C for 12 months in lyophilized state;
- 70°C for 3 months under sterile conditions after reconstitution.

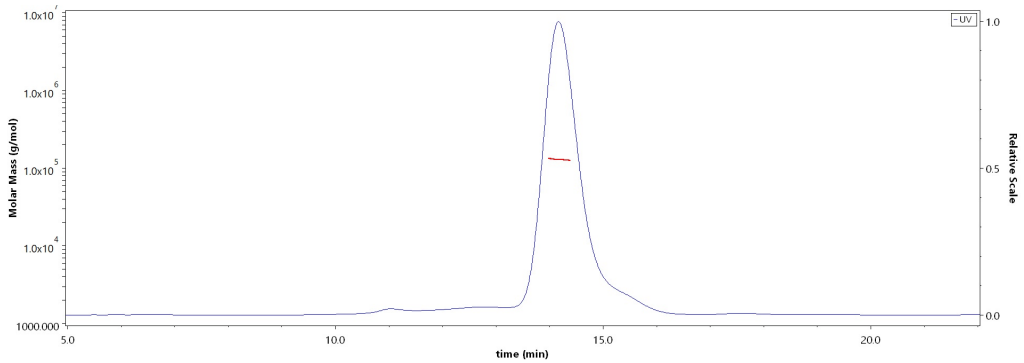
SDS-PAGE



Human TSLP R, Fc Tag on SDS-PAGE under reducing (R) condition. The gel was stained with Coomassie Blue. The purity of the protein is greater than 95% (With [Star Ribbon Pre-stained Protein Marker](#)).

Bioactivity-ELISA

SEC-MALS



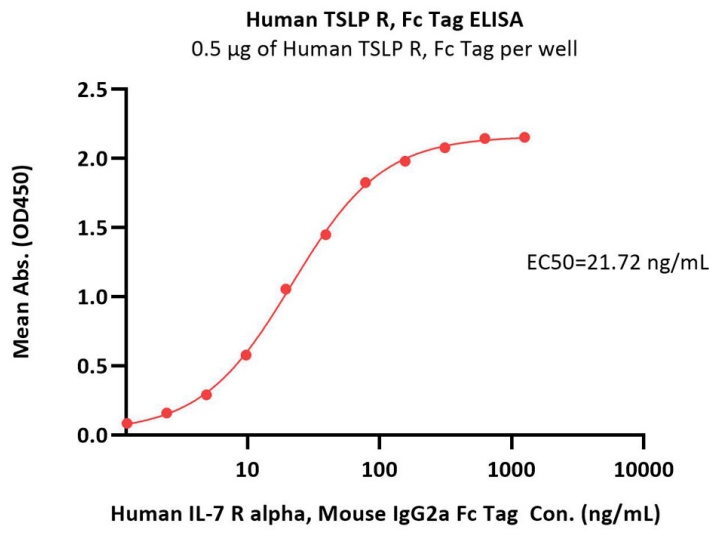
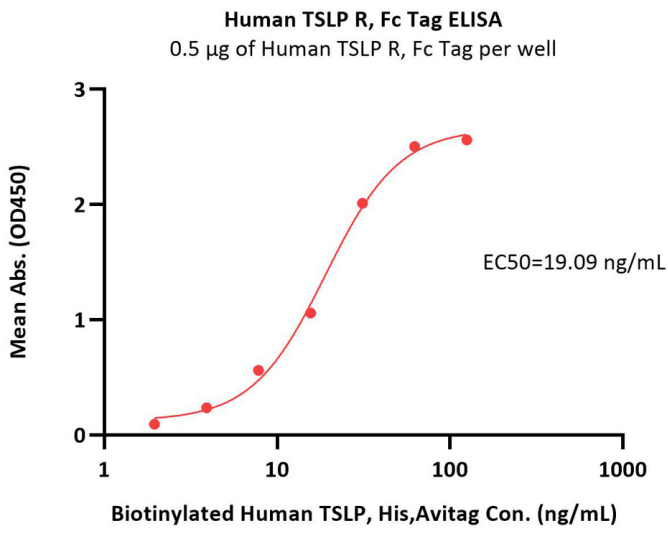
The purity of Human TSLP R, Fc Tag (Cat. No. TSR-H525a) is more than 90% and the molecular weight of this protein is around 115-140 kDa verified by SEC-MALS.

[Report](#)



Human TSLP R Protein, Fc Tag (MALS verified)

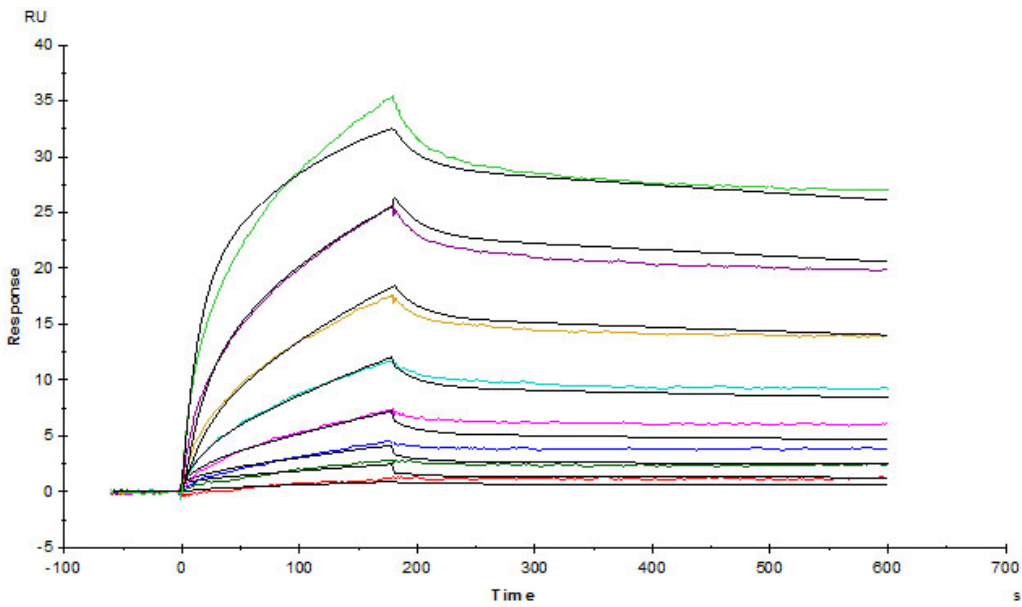
Catalog # TSR-H525a



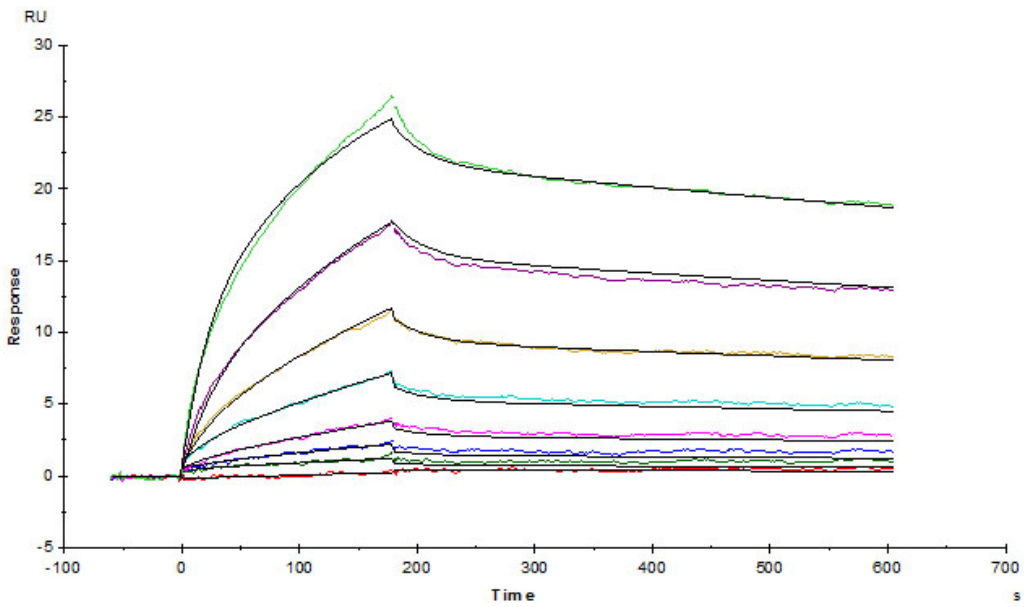
Immobilized Human TSLP R, Fc Tag (Cat. No. TSR-H525a) at 5 µg/mL (100 µL/well) can bind Biotinylated Human TSLP, His,Avitag (Cat. No. TSP-H82Eb) with a linear range of 4-31 ng/mL (QC tested).

Biotinylated Human TSLP (R127A, R130A), His,Avitag (Cat. No. TSP-H82E0) immobilized at 2 µg/mL (100 µL/well) via precoated 5 µg/mL (100 µL/well) of Human TSLP R, Fc Tag (Cat. No. TSR-H525a), can bind can bind Human IL-7 R alpha, Mouse IgG2a Fc Tag (Cat. No. IL7-H5258) with a linear range of 1-39 ng/mL (Routinely tested).

Bioactivity-SPR

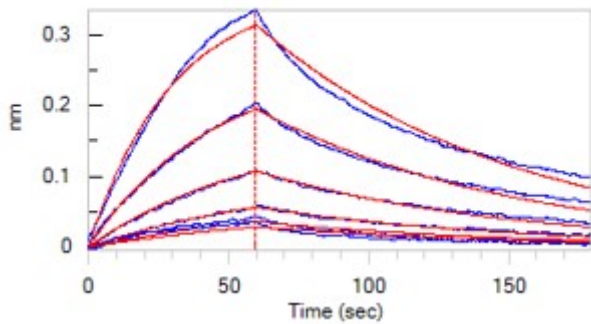
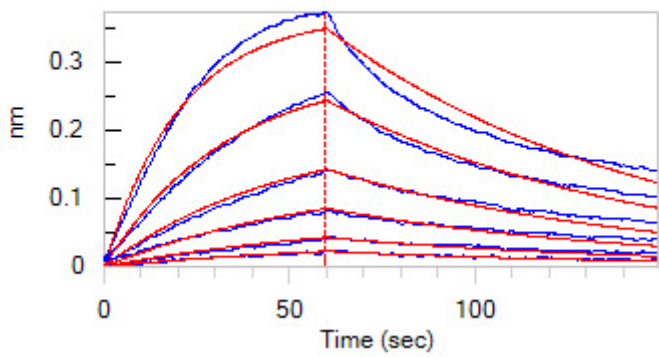


Captured Human TSLP Protein, His Tag, premium grade (Cat. No. TSP-H52Hb) on CM5 Chip via anti-His antibody, can bind Human TSLP R, Fc Tag (Cat. No. TSR-H525a) with an affinity constant of 1.81 nM as determined in SPR assay (Biacore T200) (Routinely tested).



Captured Human TSLP (R127A, R130A), His Tag (Cat. No. TSP-H52Ha) on CM5 Chip via anti-His antibody, can bind Human TSLP R, Fc Tag (Cat. No. TSR-H525a) with an affinity constant of 4.22 nM as determined in SPR assay (Biacore T200) (Routinely tested).

Bioactivity-BLI



Loaded Human TSLP R, Fc Tag (Cat. No. TSR-H525a) on Protein A Biosensor, can bind Human TSLP Protein, His Tag, premium grade (Cat. No.

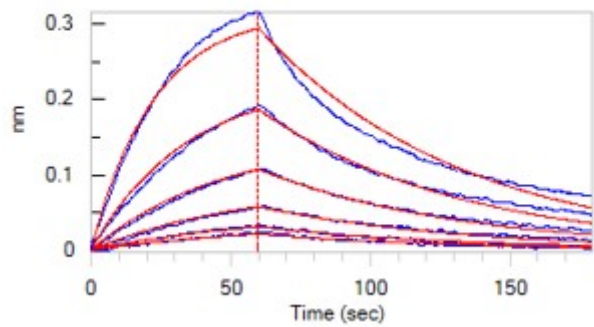


Human TSLP R Protein, Fc Tag (MALS verified)

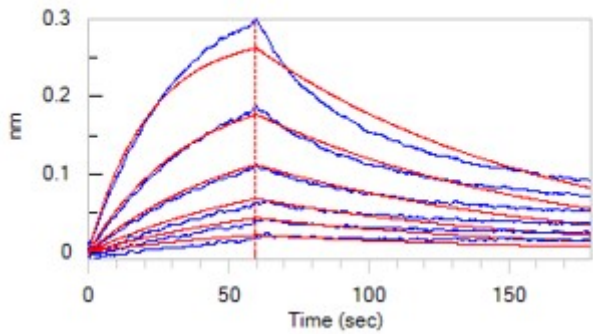
Catalog # TSR-H525a



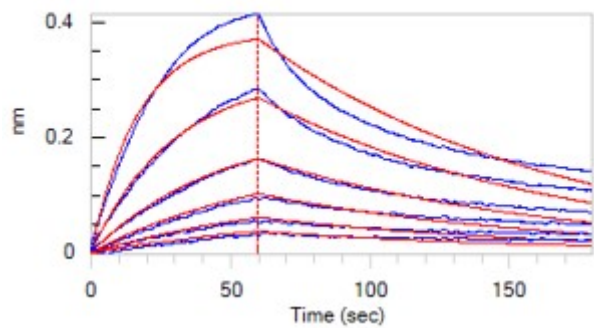
Loaded Human TSLP R, Fc Tag (Cat. No. TSR-H525a) on Protein A Biosensor, can bind Human TSLP (R127A, R130A), His Tag (Cat. No. TSP-H52Ha) with an affinity constant of 16 nM as determined in BLI assay (ForteBio Octet Red96e) (Routinely tested).



TSP-H52Hb) with an affinity constant of 24.7 nM as determined in BLI assay (ForteBio Octet R8) (Routinely tested).



Loaded Human TSLP R, Fc Tag (Cat. No. TSR-H525a) on Protein A Biosensor, can bind Human TSLP Protein (R127A, R130A), His Tag (Cat. No. TSP-H5243) with an affinity constant of 23 nM as determined in BLI assay (ForteBio Octet R8) (Routinely tested).



Loaded Human TSLP R, Fc Tag (Cat. No. TSR-H525a) on Protein A Biosensor, can bind Biotinylated Human TSLP, His,Avitag (Cat. No. TSP-H82Eb) with an affinity constant of 13.2 nM as determined in BLI assay (ForteBio Octet R8)(Routinely tested).

Loaded Human TSLP R, Fc Tag (Cat. No. TSR-H525a) on Protein A Biosensor, can bind Biotinylated Human TSLP (R127A, R130A) Protein, His,Avitag (Cat. No. TSP-H82E0) with an affinity constant of 9.67 nM as determined in BLI assay (ForteBio Octet R8) (Routinely tested).

Background

Receptor for thymic stromal lymphopoietin (TSLP). CRLF2 / TSLPR is a member of the type I cytokine receptor family. Together with the interleukin 7 receptor (IL7R) and TSLP activate STAT3, STAT5, and JAK2 pathways, which control processes such as cell proliferation and development of the hematopoietic system.

Discounts, Gifts,
and more!

